

ATOX1 Rabbit Polyclonal Antibody



CAB6874

Product Information

Size:

20uL, 50uL, 100uL, 200uL

Observed MW:

12kDa

Calculated MW:

7kDa

Applications:

WB IF

Reactivity:

Human

Protein Background

This gene encodes a copper chaperone that plays a role in copper homeostasis by binding and transporting cytosolic copper to ATPase proteins in the trans-Golgi network for later incorporation to the ceruloplasmin. This protein also functions as an antioxidant against superoxide and hydrogen peroxide, and therefore, may play a significant role in cancer carcinogenesis. Because of its cytogenetic location, this gene represents a candidate gene for 5q-syndrome.

Immunogen information

Gene ID:

475

Uniprot

O00244

Synonyms:

ATOX1; ATX1; HAH1

Antibody Information

Recommended dilutions:

WB 1:500 - 1:2000 IF 1:50 - 1:100

Source:

Rabbit

Isotype:

IgG

Purification:

Affinity purification

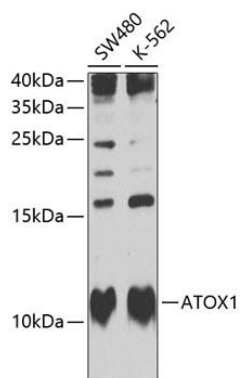
Immunogen:

Recombinant fusion protein containing a sequence corresponding to amino acids 1-68 of human ATOX1 (NP_004036.1).

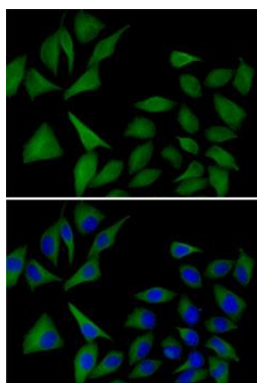
Storage:

Store at -20°C. Avoid freeze / thaw cycles. Buffer: PBS with 0.02% sodium azide, 50% glycerol, pH7.3.

Product Images



Western blot analysis of extracts of various cell lines, using ATOX1 Antibody (CAB6874) at 1:1000 dilution. Secondary antibody: HRP Goat Anti-Rabbit IgG (H+L) (CABS014) at 1:10000 dilution. Lysates/proteins: 25ug per lane. Blocking buffer: 3% nonfat dry milk in TBST. Detection: ECL Basic Kit (CABM00020). Exposure time: 15s.



Immunofluorescence analysis of MCF7 cells using ATOX1 antibody (CAB6874). Blue: DAPI for nuclear staining.