

BMP3 Rabbit Polyclonal Antibody



CAB6877

Product Information

Size:

20uL, 50uL, 100uL, 200uL

Observed MW:

53kDa

Calculated MW:

53kDa

Applications:

WB IHC

Reactivity:

Human, Mouse, Rat

Antibody Information

Recommended dilutions:

WB 1:500 - 1:2000 IHC

1:100 - 1:200

Source:

Rabbit

Isotype:

IgG

Purification:

Affinity purification

Protein Background

BMP3 belongs to the transforming growth factor-beta (TGFB) superfamily. Bone morphogenic protein, also known as osteogenin, induces bone formation.

Immunogen information

Gene ID:

651

Uniprot

P12645

Synonyms:

BMP3; BMP-3A

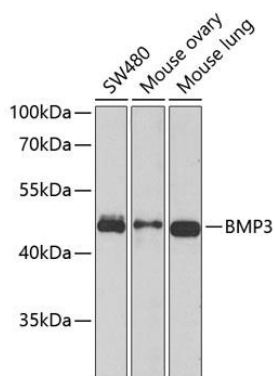
Immunogen:

Recombinant fusion protein containing a sequence corresponding to amino acids 243-472 of human BMP3 (NP_001192.2).

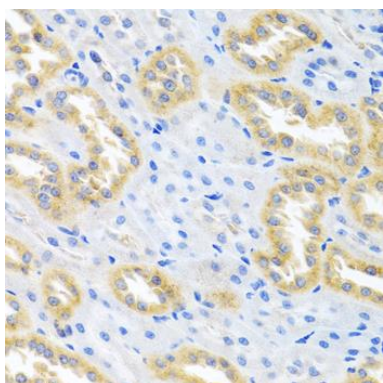
Storage:

Store at -20°C. Avoid freeze / thaw cycles. Buffer: PBS with 0.02% sodium azide, 50% glycerol, pH7.3.

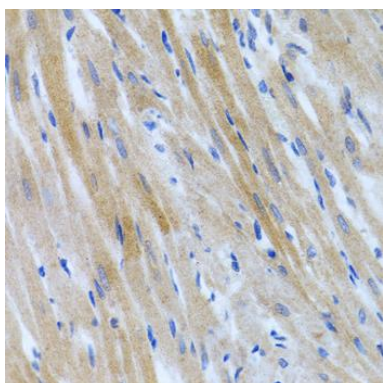
Product Images



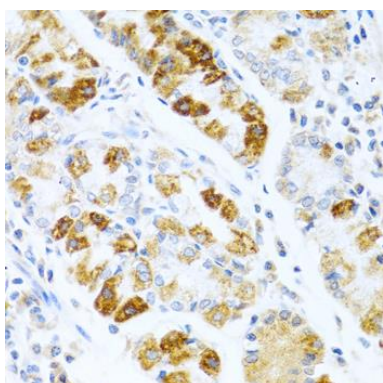
Western blot analysis of extracts of various cell lines, using BMP3 antibody (CAB6877) at 1:1000 dilution. Secondary antibody: HRP Goat Anti-Rabbit IgG (H+L) (CABS014) at 1:10000 dilution. Lysates/proteins: 25ug per lane. Blocking buffer: 3% nonfat dry milk in TBST. Detection: ECL Basic Kit (CABM00020). Exposure time: 60s.



Immunohistochemistry of paraffin-embedded rat kidney using BMP3 antibody (CAB6877) at dilution of 1:100 (40x lens).



Immunohistochemistry of paraffin-embedded rat heart using BMP3 antibody (CAB6877) at dilution of 1:100 (40x lens).



Immunohistochemistry of paraffin-embedded human stomach using BMP3 antibody (CAB6877) at dilution of 1:100 (40x lens).