

C1S Rabbit Polyclonal Antibody



CAB6878

Product Information

Size:

20uL, 50uL, 100uL, 200uL

Observed MW:

77kDa

Calculated MW:

76kDa

Applications:

WB IHC IF

Reactivity:

Human, Rat

Protein Background

This gene encodes a serine protease, which is a major constituent of the human complement subcomponent C1. C1s associates with two other complement components C1r and C1q in order to yield the first component of the serum complement system. Defects in this gene are the cause of selective C1s deficiency.

Immunogen information

Gene ID:

716

Uniprot

P09871

Synonyms:

C1S; EDSPD2

Antibody Information

Recommended dilutions:

WB 1:500 - 1:2000 IHC 1:50
- 1:200 IF 1:50 - 1:100

Source:

Rabbit

Isotype:

IgG

Purification:

Affinity purification

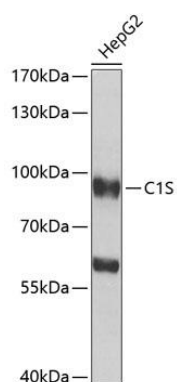
Immunogen:

Recombinant fusion protein containing a sequence corresponding to amino acids 479-688 of human C1S (NP_958850.1).

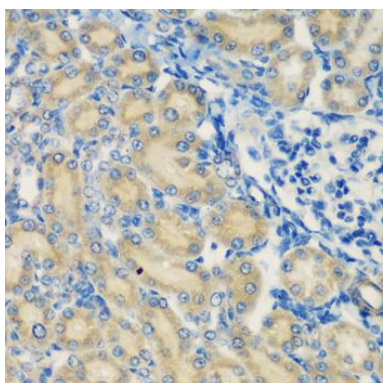
Storage:

Store at -20°C. Avoid freeze / thaw cycles. Buffer: PBS with 0.02% sodium azide, 50% glycerol, pH7.3.

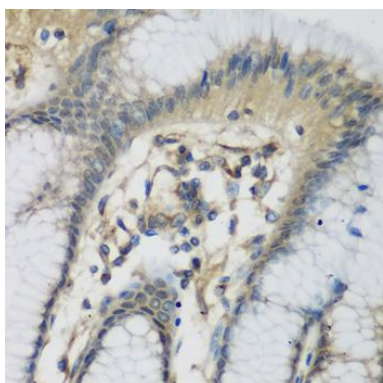
Product Images



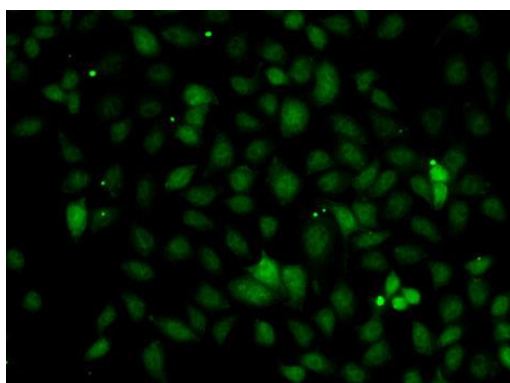
Western blot analysis of extracts of HepG2 cells, using C1S antibody (CAB6878) at 1:1000 dilution. Secondary antibody: HRP Goat Anti-Rabbit IgG (H+L) (CABS014) at 1:10000 dilution. Lysates/proteins: 25ug per lane. Blocking buffer: 3% nonfat dry milk in TBST. Detection: ECL Basic Kit (CABM00020). Exposure time: 90s.



Immunohistochemistry of paraffin-embedded rat kidney using C1S antibody (CAB6878) at dilution of 1:200 (40x lens).



Immunohistochemistry of paraffin-embedded human stomach using C1S antibody (CAB6878) at dilution of 1:200 (40x lens).



Immunofluorescence analysis of A-549 cells using C1S antibody (CAB6878).