

SEPT7 Rabbit Polyclonal Antibody



CAB6883

Product Information

Size:

20uL, 50uL, 100uL, 200uL

Observed MW:

51kDa

Calculated MW:

50kDa

Applications:

WB IHC IF

Reactivity:

Human, Mouse, Rat

Antibody Information

Recommended dilutions:

WB 1:500 - 1:2000 IHC 1:50
- 1:200 IF 1:50 - 1:100

Source:

Rabbit

Isotype:

IgG

Purification:

Affinity purification

Protein Background

This gene encodes a protein that is highly similar to the CDC10 protein of *Saccharomyces cerevisiae*. The protein also shares similarity with Diff 6 of *Drosophila* and with H5 of mouse. Each of these similar proteins, including the yeast CDC10, contains a GTP-binding motif. The yeast CDC10 protein is a structural component of the 10 nm filament which lies inside the cytoplasmic membrane and is essential for cytokinesis. This human protein functions in gliomagenesis and in the suppression of glioma cell growth, and it is required for the association of centromere-associated protein E with the kinetochore. Alternative splicing results in multiple transcript variants. Several related pseudogenes have been identified on chromosomes 5, 7, 9, 10, 11, 14, 17 and 19.

Immunogen information

Gene ID:

989

Uniprot

Q16181

Synonyms:

SEPT7; CDC10; CDC3; NBLA02942; SEPT7A; septin-7

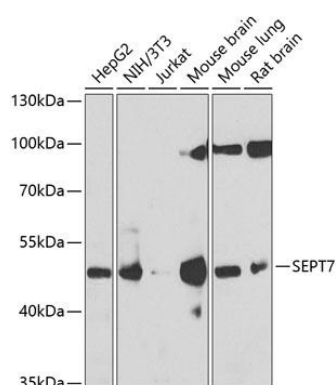
Immunogen:

Recombinant fusion protein containing a sequence corresponding to amino acids 307-436 of human SEPT7 (NP_001011553.2).

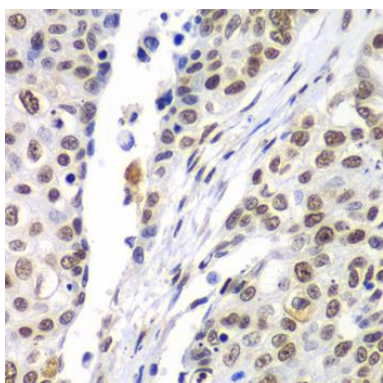
Storage:

Store at -20°C. Avoid freeze / thaw cycles. Buffer: PBS with 0.02% sodium azide, 50% glycerol, pH7.3.

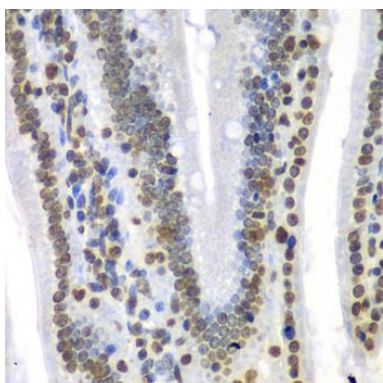
Product Images



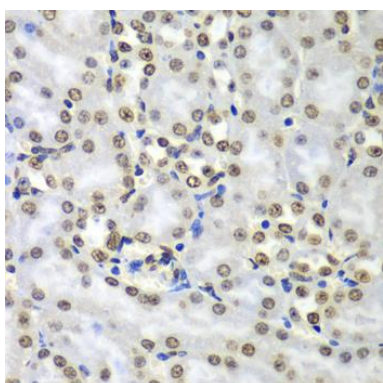
Western blot analysis of extracts of various cell lines, using SEPT7 antibody (CAB6883) at 1:1000 dilution. Secondary antibody: HRP Goat Anti-Rabbit IgG (H+L) (CABS014) at 1:10000 dilution. Lysates/proteins: 25ug per lane. Blocking buffer: 3% nonfat dry milk in TBST. Detection: ECL Basic Kit (CABM00020). Exposure time: 30s.



Immunohistochemistry of paraffin-embedded human lung cancer using SEPT7 antibody (CAB6883) at dilution of 1:100 (40x lens).



Immunohistochemistry of paraffin-embedded mouse Intestine using SEPT7 antibody (CAB6883) at dilution of 1:100 (40x lens).



Immunohistochemistry of paraffin-embedded mouse kidney using SEPT7 antibody (CAB6883) at dilution of 1:100 (40x lens).