

COL10A1 Rabbit Polyclonal Antibody



CAB6889

Product Information

Size:

20uL, 50uL, 100uL, 200uL

Observed MW:

Calculated MW:

66kDa

Applications:

IHC

Reactivity:

Human, Mouse, Rat

Antibody Information

Recommended dilutions:

IHC 1:100 - 1:200

Source:

Rabbit

Isotype:

IgG

Purification:

Affinity purification

Protein Background

This gene encodes the alpha chain of type X collagen, a short chain collagen expressed by hypertrophic chondrocytes during endochondral ossification. Unlike type VIII collagen, the other short chain collagen, type X collagen is a homotrimer. Mutations in this gene are associated with Schmid type metaphyseal chondrodysplasia (SMCD) and Japanese type spondylometaphyseal dysplasia (SMD).

Immunogen information

Gene ID:

1300

Uniprot

Q03692

Synonyms:

COL10A1

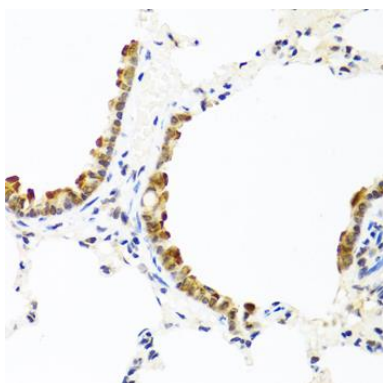
Immunogen:

Recombinant fusion protein containing a sequence corresponding to amino acids 521-680 of human COL10A1 (NP_000484.2).

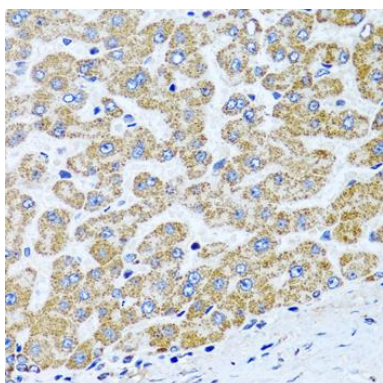
Storage:

Store at -20°C. Avoid freeze / thaw cycles. Buffer: PBS with 0.02% sodium azide, 50% glycerol, pH7.3.

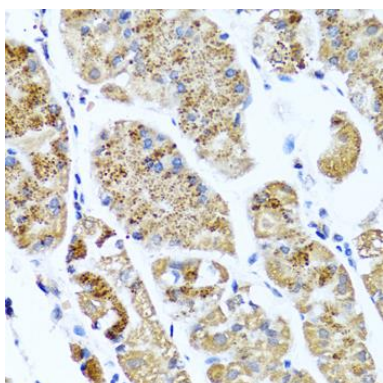
Product Images



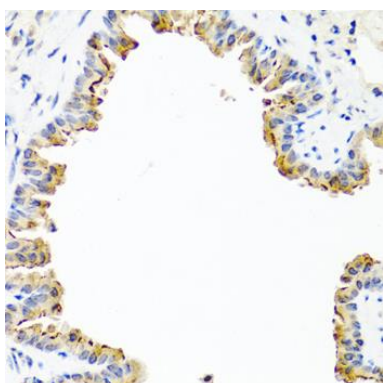
Immunohistochemistry of paraffin-embedded rat lung using COL10A1 antibody (CAB6889) at dilution of 1:100 (40x lens).



Immunohistochemistry of paraffin-embedded human liver using COL10A1 antibody (CAB6889) at dilution of 1:100 (40x lens).



Immunohistochemistry of paraffin-embedded human stomach using COL10A1 antibody (CAB6889) at dilution of 1:100 (40x lens).



Immunohistochemistry of paraffin-embedded mouse lung using COL10A1 antibody (CAB6889) at dilution of 1:100 (40x lens).