

CYP4B1 Rabbit Polyclonal Antibody



CAB6894

Product Information

Size:

20uL, 50uL, 100uL, 200uL

Observed MW:

59kDa

Calculated MW:

58kDa/59kDa

Applications:

WB IF

Reactivity:

Human

Protein Background

This gene encodes a member of the cytochrome P450 superfamily of enzymes. The cytochrome P450 proteins are monooxygenases which catalyze many reactions involved in drug metabolism and synthesis of cholesterol, steroids and other lipids. This protein localizes to the endoplasmic reticulum. In rodents, the homologous protein has been shown to metabolize certain carcinogens; however, the specific function of the human protein has not been determined. Multiple transcript variants have been found for this gene.

Immunogen information

Gene ID:

1580

Uniprot

P13584

Synonyms:

CYP4B1; CYP1VB1; P-450HP

Antibody Information

Recommended dilutions:

WB 1:500 - 1:2000 IF 1:50 - 1:200

Source:

Rabbit

Isotype:

IgG

Purification:

Affinity purification

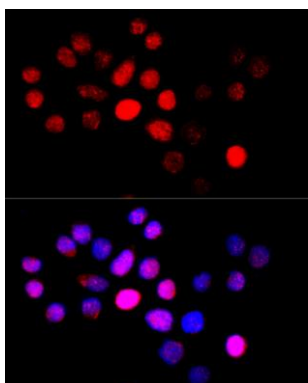
Immunogen:

Recombinant fusion protein containing a sequence corresponding to amino acids 30-250 of human CYP4B1 (NP_001093242.1).

Storage:

Store at -20°C. Avoid freeze / thaw cycles. Buffer: PBS with 0.02% sodium azide, 50% glycerol, pH7.3.

Product Images



Immunofluorescence analysis of HeLa cells using CYP4B1 antibody (CAB6894) at dilution of 1:100 (40x lens). Blue: DAPI for nuclear staining.