

FKBP3 Rabbit Polyclonal Antibody



CAB6907

Product Information

Size:

20uL, 50uL, 100uL, 200uL

Observed MW:

30kDa

Calculated MW:

25kDa

Applications:

WB IF IP

Reactivity:

Human

Protein Background

The protein encoded by this gene is a member of the immunophilin protein family, which play a role in immunoregulation and basic cellular processes involving protein folding and trafficking. This encoded protein is a cis-trans prolyl isomerase that binds the immunosuppressants FK506 and rapamycin, as well as histone deacetylases, the transcription factor YY1, casein kinase II, and nucleolin. It has a higher affinity for rapamycin than for FK506 and thus may be an important target molecule for immunosuppression by rapamycin.

Immunogen information

Gene ID:

2287

Uniprot

Q00688

Synonyms:

FKBP3; FKBP-25; FKBP-3; FKBP25; PPIase

Antibody Information

Recommended dilutions:

WB 1:500 - 1:2000 IF 1:50 - 1:100 IP 1:50 - 1:100

Source:

Rabbit

Isotype:

IgG

Purification:

Affinity purification

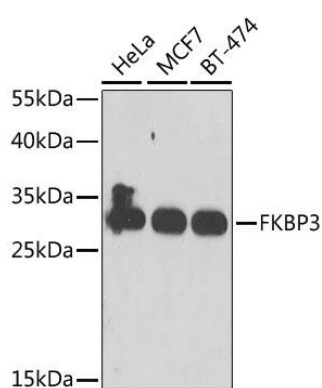
Immunogen:

Recombinant fusion protein containing a sequence corresponding to amino acids 1-224 of human FKBP3 (NP_002004.1).

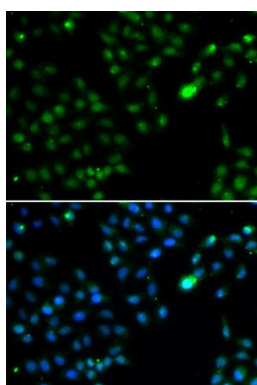
Storage:

Store at -20°C. Avoid freeze / thaw cycles. Buffer: PBS with 0.02% sodium azide, 50% glycerol, pH7.3.

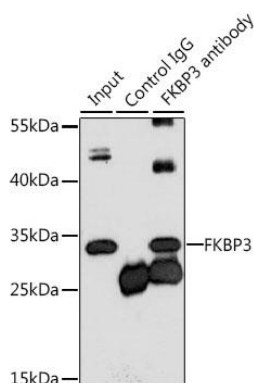
Product Images



Western blot analysis of extracts of various cell lines, using FKBP3 antibody (CAB6907) at 1:1000 dilution. Secondary antibody: HRP Goat Anti-Rabbit IgG (H+L) (CABS014) at 1:10000 dilution. Lysates/proteins: 25ug per lane. Blocking buffer: 3% nonfat dry milk in TBST. Detection: ECL Enhanced Kit (CABM00021). Exposure time: 30s.



Immunofluorescence analysis of HeLa cells using FKBP3 antibody (CAB6907). Blue: DAPI for nuclear staining.



Immunoprecipitation analysis of 200ug extracts of MCF-7 cells, using 3 ug FKBP3 antibody (CAB6907). Western blot was performed from the immunoprecipitate using FKBP3 antibody (CAB6907) at a dilution of 1:1000.