

# GABPB1 Rabbit Polyclonal Antibody



CAB6909

## Product Information

### Size:

20uL, 50uL, 100uL, 200uL

### Observed MW:

50kDa

### Calculated MW:

36kDa/38kDa/41kDa/42kDa

### Applications:

WB IHC IF

### Reactivity:

Human, Mouse

## Antibody Information

### Recommended dilutions:

WB 1:500 - 1:2000 IHC 1:50  
- 1:200 IF 1:50 - 1:100

### Source:

Rabbit

### Isotype:

IgG

### Purification:

Affinity purification

## Protein Background

This gene encodes the GA-binding protein transcription factor, beta subunit. This protein forms a tetrameric complex with the alpha subunit, and stimulates transcription of target genes. The encoded protein may be involved in activation of cytochrome oxidase expression and nuclear control of mitochondrial function. The crystal structure of a similar protein in mouse has been resolved as a ternary protein complex. Multiple transcript variants encoding distinct isoforms have been identified for this gene.

## Immunogen information

### Gene ID:

2553

### Uniprot

Q06547

### Synonyms:

GABPB1; BABPB2; E4TF1; E4TF1-47; E4TF1-53; E4TF1B; GABPB;  
GABPB-1; GABPB2; NRF2B1; NRF2B2

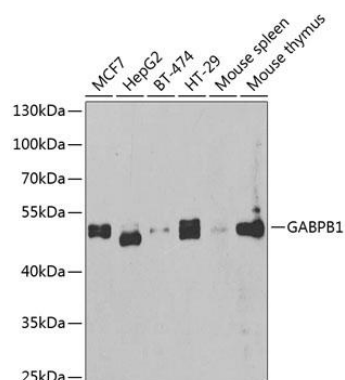
### Immunogen:

Recombinant fusion protein containing a sequence corresponding to amino acids 231-395 of human GABPB1 (NP\_005245.2).

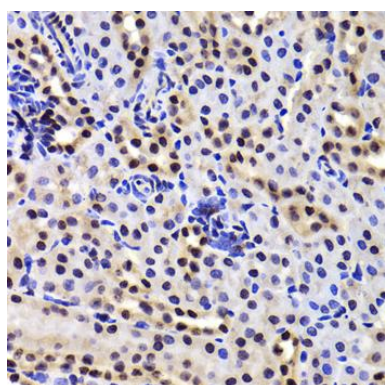
### Storage:

Store at -20°C. Avoid freeze / thaw cycles. Buffer: PBS with 0.02% sodium azide, 50% glycerol, pH7.3.

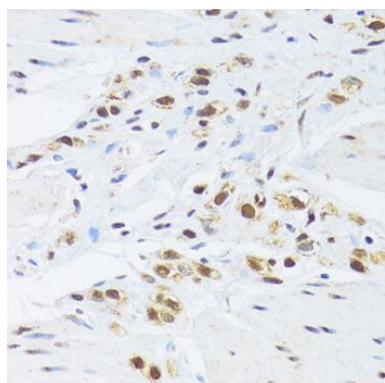
## Product Images



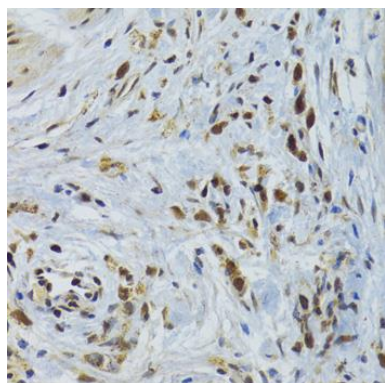
Western blot analysis of extracts of various cell lines, using GABPB1 antibody (CAB6909) at 1:1000 dilution. Secondary antibody: HRP Goat Anti-Rabbit IgG (H+L) (CABS014) at 1:10000 dilution. Lysates/proteins: 25ug per lane. Blocking buffer: 3% nonfat dry milk in TBST. Detection: ECL Basic Kit (CABM00020). Exposure time: 90s.



Immunohistochemistry of paraffin-embedded mouse kidney using GABPB1 Antibody (CAB6909) at dilution of 1:100 (40x lens).



Immunohistochemistry of paraffin-embedded human stomach using GABPB1 Antibody (CAB6909) at dilution of 1:100 (40x lens).



Immunohistochemistry of paraffin-embedded human gastric cancer using GABPB1 Antibody (CAB6909) at dilution of 1:100 (40x lens).