

GALNT2 Rabbit Polyclonal Antibody



CAB6910

Product Information

Size:

20uL, 50uL, 100uL, 200uL

Observed MW:

65kDa

Calculated MW:

30kDa/64kDa

Applications:

WB IHC IF

Reactivity:

Human, Mouse, Rat

Protein Background

This gene encodes a member of the glycosyltransferase 2 protein family. Members of this family initiate mucin-type O-glycosylation of peptides in the Golgi apparatus. The encoded protein may be involved in O-linked glycosylation of the immunoglobulin A1 hinge region. This gene may influence triglyceride levels, and may be involved Type 2 diabetes, as well as several types of cancer. Alternative splicing results in multiple transcript variants.

Immunogen information

Gene ID:

2590

Uniprot

Q10471

Synonyms:

GALNT2; GalNAc-T2

Antibody Information

Recommended dilutions:

WB 1:500 - 1:2000 IHC 1:50
- 1:200 IF 1:50 - 1:100

Source:

Rabbit

Isotype:

IgG

Purification:

Affinity purification

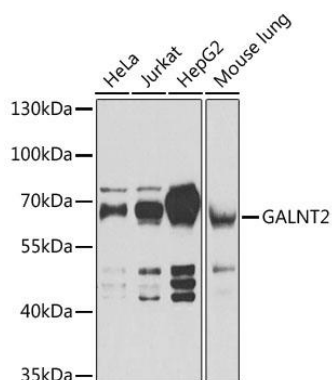
Immunogen:

Recombinant fusion protein containing a sequence corresponding to amino acids 442-571 of human GALNT2 (NP_004472.1).

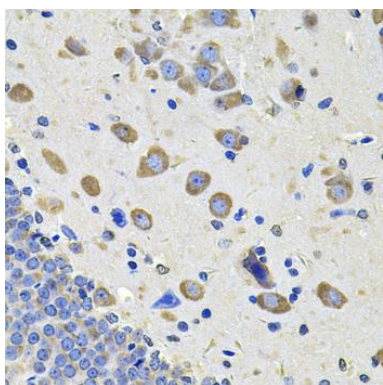
Storage:

Store at -20°C. Avoid freeze / thaw cycles. Buffer: PBS with 0.02% sodium azide, 50% glycerol, pH7.3.

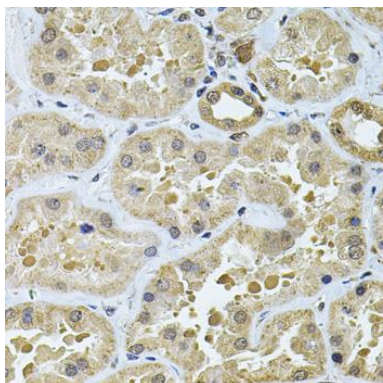
Product Images



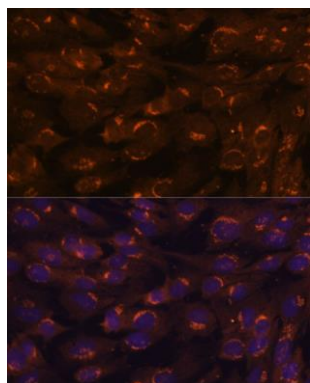
Western blot analysis of extracts of various cell lines, using GALNT2 antibody (CAB6910) at 1:1000 dilution. Secondary antibody: HRP Goat Anti-Rabbit IgG (H+L) (CABS014) at 1:10000 dilution. Lysates/proteins: 25ug per lane. Blocking buffer: 3% nonfat dry milk in TBST. Detection: ECL Basic Kit (CABM00020). Exposure time: 1s.



Immunohistochemistry of paraffin-embedded rat brain using GALNT2 Antibody (CAB6910) at dilution of 1:100 (40x lens).



Immunohistochemistry of paraffin-embedded human kidney using GALNT2 Antibody (CAB6910) at dilution of 1:100 (40x lens).



Immunofluorescence analysis of C6 cells using GALNT2 antibody (CAB6910) at dilution of 1:100. Blue: DAPI for nuclear staining.