

# GIF Rabbit Polyclonal Antibody



CAB6914

---

## Product Information

### Size:

20uL, 50uL, 100uL, 200uL

### Observed MW:

45kDa

### Calculated MW:

42kDa/45kDa

### Applications:

WB IF

### Reactivity:

Human, Mouse

## Protein Background

This gene is a member of the cobalamin transport protein family. It encodes a glycoprotein secreted by parietal cells of the gastric mucosa and is required for adequate absorption of vitamin B12. Vitamin B12 is necessary for erythrocyte maturation and mutations in this gene may lead to congenital pernicious anemia.

## Immunogen information

### Gene ID:

2694

### Uniprot

P27352

### Synonyms:

GIF; IF; IFMH; INF; TCN3

## Antibody Information

### Recommended dilutions:

WB 1:500 - 1:2000 IF 1:50 - 1:100

### Source:

Rabbit

### Isotype:

IgG

### Purification:

Affinity purification

### Immunogen:

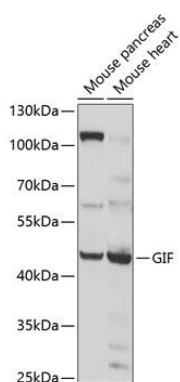
Recombinant fusion protein containing a sequence corresponding to amino acids 20-300 of human GIF (NP\_005133.2).

### Storage:

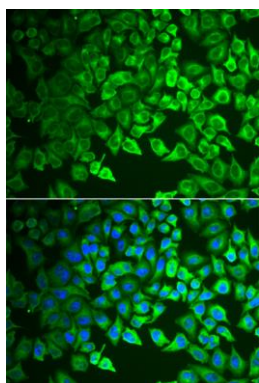
Store at -20°C. Avoid freeze / thaw cycles. Buffer: PBS with 0.02% sodium azide, 50% glycerol, pH7.3.

## Product Images

---



Western blot analysis of extracts of various cell lines, using GIF antibody (CAB6914) at 1:1000 dilution. Secondary antibody: HRP Goat Anti-Rabbit IgG (H+L) (CABS014) at 1:10000 dilution. Lysates/proteins: 25ug per lane. Blocking buffer: 3% nonfat dry milk in TBST. Detection: ECL Basic Kit (CABM00020). Exposure time: 1s.



Immunofluorescence analysis of A549 cells using GIF antibody (CAB6914). Blue: DAPI for nuclear staining.