

HIP1 Rabbit Polyclonal Antibody



CAB6921

Product Information

Size:

20uL, 50uL, 100uL, 200uL

Observed MW:

120kDa

Calculated MW:

110kDa/113kDa/116kDa

Applications:

WB IHC IF

Reactivity:

Human, Mouse

Protein Background

The product of this gene is a membrane-associated protein that functions in clathrin-mediated endocytosis and protein trafficking within the cell. The encoded protein binds to the huntingtin protein in the brain; this interaction is lost in Huntington's disease. Alternative splicing results in multiple transcript variants.

Immunogen information

Gene ID:

3092

Uniprot

O00291

Synonyms:

HIP1; HIP-I; ILWEQ; SHON; SHONbeta; SHONGamma

Antibody Information

Recommended dilutions:

WB 1:500 - 1:2000 IHC 1:50
- 1:200 IF 1:50 - 1:100

Source:

Rabbit

Isotype:

IgG

Purification:

Affinity purification

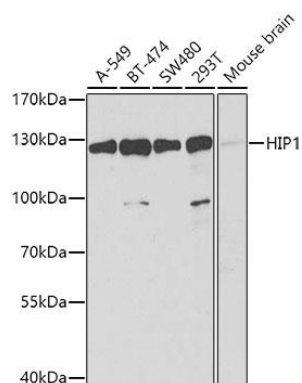
Immunogen:

Recombinant fusion protein containing a sequence corresponding to amino acids 410-690 of human HIP1 (NP_005329.3).

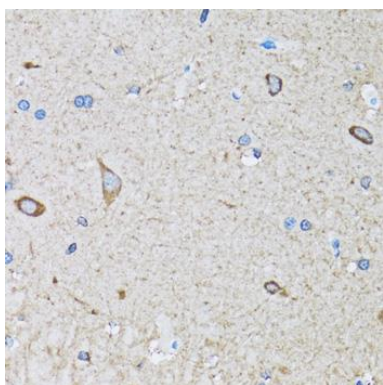
Storage:

Store at -20°C. Avoid freeze / thaw cycles. Buffer: PBS with 0.02% sodium azide, 50% glycerol, pH7.3.

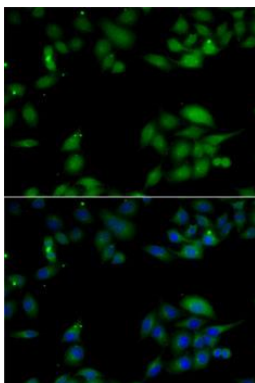
Product Images



Western blot analysis of extracts of various cell lines, using HIP1 antibody (CAB6921) at 1:1000 dilution. Secondary antibody: HRP Goat Anti-Rabbit IgG (H+L) (CABS014) at 1:10000 dilution. Lysates/proteins: 25ug per lane. Blocking buffer: 3% nonfat dry milk in TBST. Detection: ECL Basic Kit (CABM00020). Exposure time: 90s.



Immunohistochemistry of paraffin-embedded mouse brain using HIP1 antibody (CAB6921) at dilution of 1:100 (40x lens).



Immunofluorescence analysis of MCF7 cells using HIP1 antibody (CAB6921). Blue: DAPI for nuclear staining.