

# HLA-DMA Rabbit Polyclonal Antibody



CAB6922

## Product Information

### Size:

20uL, 50uL, 100uL, 200uL

### Observed MW:

35kDa

### Calculated MW:

29kDa

### Applications:

WB

### Reactivity:

Human, Mouse

## Antibody Information

### Recommended dilutions:

WB 1:500 - 1:2000

### Source:

Rabbit

### Isotype:

IgG

### Purification:

Affinity purification

## Protein Background

HLA-DMA belongs to the HLA class II alpha chain paralogues. This class II molecule is a heterodimer consisting of an alpha (DMA) and a beta chain (DMB), both anchored in the membrane. It is located in intracellular vesicles. DM plays a central role in the peptide loading of MHC class II molecules by helping to release the CLIP molecule from the peptide binding site. Class II molecules are expressed in antigen presenting cells (APC: B lymphocytes, dendritic cells, macrophages). The alpha chain is approximately 33-35 kDa and its gene contains 5 exons. Exon one encodes the leader peptide, exons 2 and 3 encode the two extracellular domains, exon 4 encodes the transmembrane domain and the cytoplasmic tail.

## Immunogen information

### Gene ID:

3108

### Uniprot

P28067

### Synonyms:

HLA-DMA; D6S222E; DMA; HLADM; RING6; major histocompatibility complex; class II; DM alpha

### Immunogen:

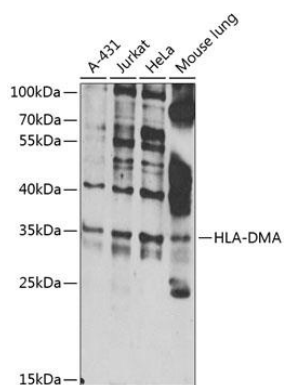
Recombinant fusion protein containing a sequence corresponding to amino acids 27-233 of human HLA-DMA (NP\_006111.2).

### Storage:

Store at -20°C. Avoid freeze / thaw cycles. Buffer: PBS with 0.02% sodium azide, 50% glycerol, pH7.3.

## Product Images

---



Western blot analysis of extracts of various cell lines, using HLA-DMA antibody (CAB6922) at 1:1000 dilution. Secondary antibody: HRP Goat Anti-Rabbit IgG (H+L) (CABS014) at 1:10000 dilution. Lysates/proteins: 25ug per lane. Blocking buffer: 3% nonfat dry milk in TBST. Detection: ECL Basic Kit (CABM00020). Exposure time: 30s.