

LGALS3BP Rabbit Polyclonal Antibody



CAB6929

Product Information

Size:

20uL, 50uL, 100uL, 200uL

Observed MW:

75kDa-110kDa

Calculated MW:

65kDa

Applications:

WB IF

Reactivity:

Human, Mouse, Rat

Antibody Information

Recommended dilutions:

WB 1:500 - 1:2000 IF 1:50 - 1:100

Source:

Rabbit

Isotype:

IgG

Purification:

Affinity purification

Protein Background

The galectins are a family of beta-galactoside-binding proteins implicated in modulating cell-cell and cell-matrix interactions. LGALS3BP has been found elevated in the serum of patients with cancer and in those infected by the human immunodeficiency virus (HIV). It appears to be implicated in immune response associated with natural killer (NK) and lymphokine-activated killer (LAK) cell cytotoxicity. Using fluorescence in situ hybridization the full length 90K cDNA has been localized to chromosome 17q25. The native protein binds specifically to a human macrophage-associated lectin known as Mac-2 and also binds galectin 1.

Immunogen information

Gene ID:

3959

Uniprot

Q08380

Synonyms:

LGALS3BP; 90K; BTBD17B; CyCAP; M2BP; MAC-2-BP; TANGO10B; gp90

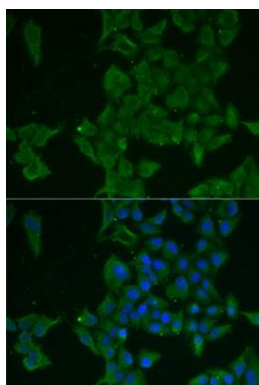
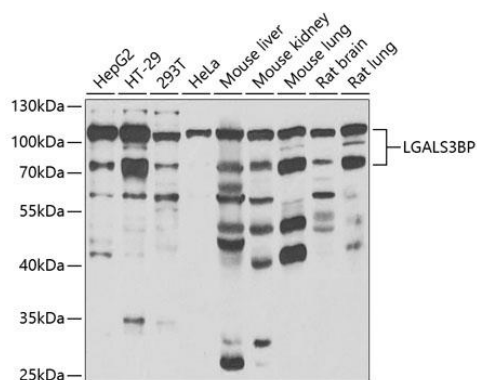
Immunogen:

Recombinant fusion protein containing a sequence corresponding to amino acids 306-585 of human LGALS3BP (NP_005558.1).

Storage:

Store at -20°C. Avoid freeze / thaw cycles. Buffer: PBS with 0.02% sodium azide, 50% glycerol, pH7.3.

Product Images



Western blot analysis of extracts of various cell lines, using LGALS3BP antibody (CAB6929) at 1:1000 dilution. Secondary antibody: HRP Goat Anti-Rabbit IgG (H+L) (CABS014) at 1:10000 dilution. Lysates/proteins: 25ug per lane. Blocking buffer: 3% nonfat dry milk in TBST. Detection: ECL Basic Kit (CABM00020). Exposure time: 90s.

Immunofluorescence analysis of MCF7 cells using LGALS3BP antibody (CAB6929). Blue: DAPI for nuclear staining.