

CAB6938

## Product Information

### Size:

20uL, 50uL, 100uL, 200uL

### Observed MW:

85kDa

### Calculated MW:

48kDa/78kDa/85kDa/86kDa

### Applications:

WB IHC IF

### Reactivity:

Human, Mouse, Rat

## Protein Background

This gene encodes a H1 histone binding protein that is involved in transporting histones into the nucleus of dividing cells. Multiple isoforms are encoded by transcript variants of this gene. The somatic form is expressed in all mitotic cells, is localized to the nucleus, and is coupled to the cell cycle. The testicular form is expressed in embryonic tissues, tumor cells, and the testis. In male germ cells, this protein is localized to the cytoplasm of primary spermatocytes, the nucleus of spermatids, and the periacrosomal region of mature spermatozoa.

## Immunogen information

### Gene ID:

4678

### Uniprot

P49321

### Synonyms:

NASP; FLB7527; HMDRA1; PRO1999

## Antibody Information

### Recommended dilutions:

WB 1:500 - 1:2000 IHC 1:50  
- 1:200 IF 1:50 - 1:200

### Source:

Rabbit

### Isotype:

IgG

### Purification:

Affinity purification

### Immunogen:

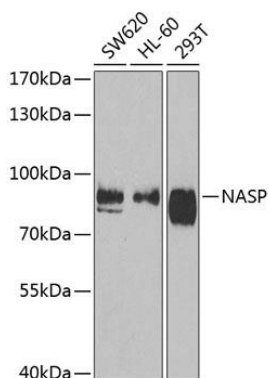
Recombinant fusion protein containing a sequence corresponding to amino acids 180-449 of human NASP (NP\_689511.2).

### Storage:

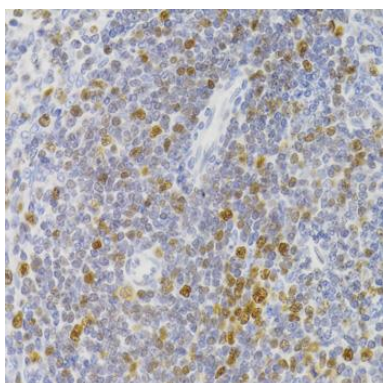
Store at -20°C. Avoid freeze / thaw cycles. Buffer: PBS with 0.02% sodium azide, 50% glycerol, pH7.3.

## Product Images

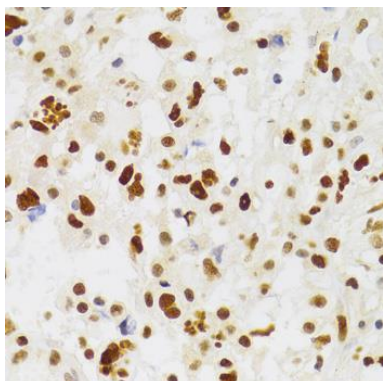
---



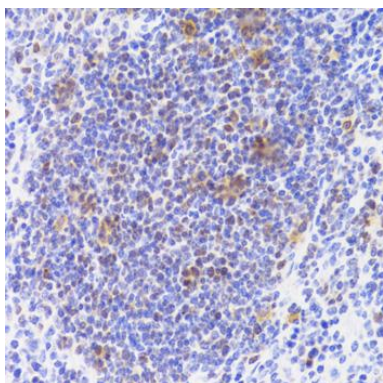
Western blot analysis of extracts of various cell lines, using NASP antibody (CAB6938) at 1:1000 dilution. Secondary antibody: HRP Goat Anti-Rabbit IgG (H+L) (CABS014) at 1:10000 dilution. Lysates/proteins: 25ug per lane. Blocking buffer: 3% nonfat dry milk in TBST. Detection: ECL Basic Kit (CABM00020). Exposure time: 90s.



Immunohistochemistry of paraffin-embedded rat spleen using NASP Antibody (CAB6938) at dilution of 1:100 (40x lens).



Immunohistochemistry of paraffin-embedded human brain astrocytoma using NASP Antibody (CAB6938) at dilution of 1:100 (40x lens).



Immunohistochemistry of paraffin-embedded mouse spleen using NASP Antibody (CAB6938) at dilution of 1:100 (40x lens).