

OPHN1 Rabbit Polyclonal Antibody



CAB6940

Product Information

Size:

20uL, 50uL, 100uL, 200uL

Observed MW:

92kDa

Calculated MW:

36kDa/91kDa

Applications:

WB

Reactivity:

Human, Mouse

Protein Background

This gene encodes a Rho-GTPase-activating protein that promotes GTP hydrolysis of Rho subfamily members. Rho proteins are important mediators of intracellular signal transduction, which affects cell migration and cell morphogenesis. Mutations in this gene are responsible for OPHN1-related X-linked mental retardation with cerebellar hypoplasia and distinctive facial dysmorphism.

Immunogen information

Gene ID:

4983

Uniprot

O60890

Synonyms:

OPHN1; ARHGAP41; MRX60; OPN1

Antibody Information

Recommended dilutions:

WB 1:500 - 1:2000

Source:

Rabbit

Isotype:

IgG

Purification:

Affinity purification

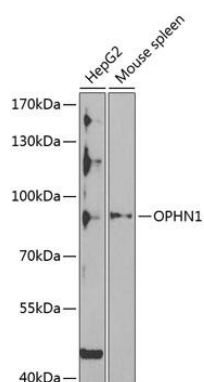
Immunogen:

Recombinant fusion protein containing a sequence corresponding to amino acids 1-270 of human OPHN1 (NP_002538.1).

Storage:

Store at -20°C. Avoid freeze / thaw cycles. Buffer: PBS with 0.02% sodium azide, 50% glycerol, pH7.3.

Product Images



Western blot analysis of extracts of various cell lines, using OPHN1 Antibody (CAB6940) at 1:1000 dilution. Secondary antibody: HRP Goat Anti-Rabbit IgG (H+L) (CABS014) at 1:10000 dilution. Lysates/proteins: 25ug per lane. Blocking buffer: 3% nonfat dry milk in TBST. Detection: ECL Basic Kit (CABM00020). Exposure time: 30s.