

PDE6B Rabbit Polyclonal Antibody



CAB6942

Product Information

Size:

20uL, 50uL, 100uL, 200uL

Observed MW:

98kDa

Calculated MW:

66kDa/98kDa

Applications:

WB IHC IF

Reactivity:

Human, Mouse, Rat

Protein Background

Photon absorption triggers a signaling cascade in rod photoreceptors that activates cGMP phosphodiesterase (PDE), resulting in the rapid hydrolysis of cGMP, closure of cGMP-gated cation channels, and hyperpolarization of the cell. PDE is a peripheral membrane heterotrimeric enzyme made up of alpha, beta, and gamma subunits. This gene encodes the beta subunit. Mutations in this gene result in retinitis pigmentosa and autosomal dominant congenital stationary night blindness. Multiple transcript variants encoding different isoforms have been found for this gene.

Immunogen information

Gene ID:

5158

Uniprot

P35913

Synonyms:

PDE6B; CSNB3; CSNBAD2; PDEB; RP40; rd1; GMP-PDEbeta

Antibody Information

Recommended dilutions:

WB 1:500 - 1:2000 IHC 1:50
- 1:100 IF 1:50 - 1:100

Source:

Rabbit

Isotype:

IgG

Purification:

Affinity purification

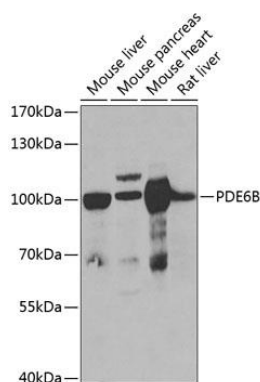
Immunogen:

Recombinant fusion protein containing a sequence corresponding to amino acids 1-190 of human PDE6B (NP_001138763.1).

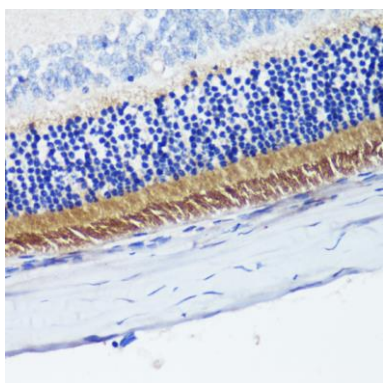
Storage:

Store at -20°C. Avoid freeze / thaw cycles. Buffer: PBS with 0.02% sodium azide, 50% glycerol, pH7.3.

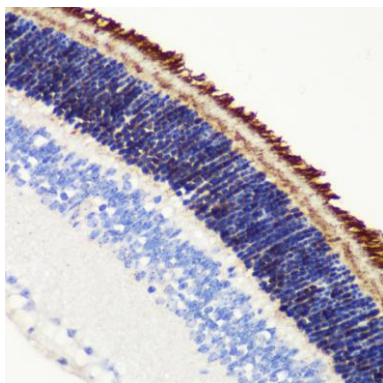
Product Images



Western blot analysis of extracts of various cell lines, using PDE6B antibody (CAB6942) at 1:1000 dilution. Secondary antibody: HRP Goat Anti-Rabbit IgG (H+L) (CABS014) at 1:10000 dilution. Lysates/proteins: 25ug per lane. Blocking buffer: 3% nonfat dry milk in TBST. Detection: ECL Basic Kit (CABM00020). Exposure time: 90s.



Immunohistochemistry of paraffin-embedded rat retina using PDE6B antibody (CAB6942) at dilution of 1:200 (40x lens).



Immunohistochemistry of paraffin-embedded mouse retina using PDE6B antibody (CAB6942) at dilution of 1:200 (40x lens).