

# PFKFB3 Rabbit Polyclonal Antibody



CAB6945

## Product Information

### Size:

20uL, 50uL, 100uL, 200uL

### Observed MW:

57kDa

### Calculated MW:

57kDa/58kDa/59kDa/60kDa

### Applications:

WB IHC

### Reactivity:

Human, Mouse, Rat

## Antibody Information

### Recommended dilutions:

WB 1:500 - 1:1000 IHC 1:50  
- 1:100

### Source:

Rabbit

### Isotype:

IgG

### Purification:

Affinity purification

## Protein Background

The protein encoded by this gene belongs to a family of bifunctional proteins that are involved in both the synthesis and degradation of fructose-2, 6-bisphosphate, a regulatory molecule that controls glycolysis in eukaryotes. The encoded protein has a 6-phosphofructo-2-kinase activity that catalyzes the synthesis of fructose-2, 6-bisphosphate (F2, 6BP), and a fructose-2, 6-biphosphatase activity that catalyzes the degradation of F2, 6BP. This protein is required for cell cycle progression and prevention of apoptosis. It functions as a regulator of cyclin-dependent kinase 1, linking glucose metabolism to cell proliferation and survival in tumor cells. Several alternatively spliced transcript variants encoding different isoforms have been found for this gene.

## Immunogen information

### Gene ID:

5209

### Uniprot

Q16875

### Synonyms:

PFKFB3; IPFK2; PFK2; iPFK-2

### Immunogen:

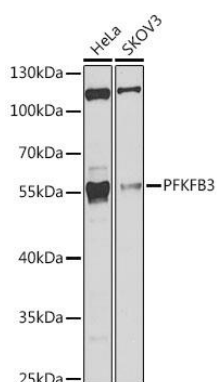
A synthetic peptide corresponding to a sequence within amino acids 400-500 of human PFKFB3 (NP\_004557.1).

### Storage:

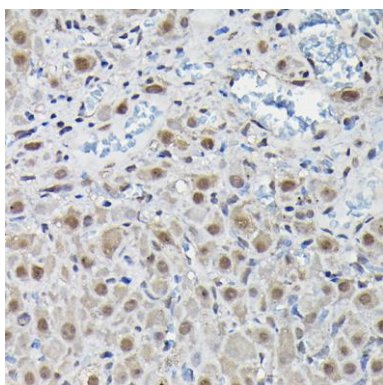
Store at -20°C. Avoid freeze / thaw cycles. Buffer: PBS with 0.02% sodium azide, 50% glycerol, pH7.3.

## Product Images

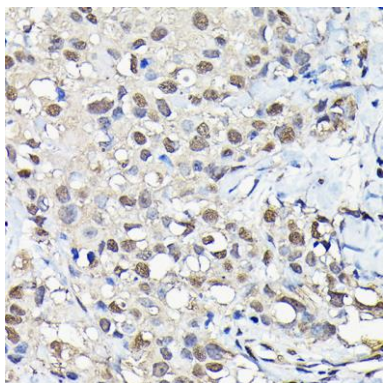
---



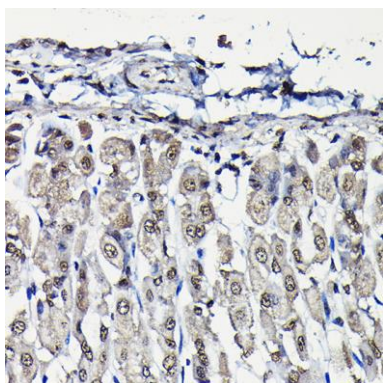
Western blot analysis of extracts of various cell lines, using PFKFB3 antibody (CAB6945) at 1:1000 dilution. Secondary antibody: HRP Goat Anti-Rabbit IgG (H+L) (CABS014) at 1:10000 dilution. Lysates/proteins: 25ug per lane. Blocking buffer: 3% nonfat dry milk in TBST. Detection: ECL Basic Kit (CABM00020). Exposure time: 30s.



Immunohistochemistry of paraffin-embedded rat ovary using PFKFB3 Rabbit pAb (CAB6945) at dilution of 1:25 (40x lens).



Immunohistochemistry of paraffin-embedded human breast cancer using PFKFB3 Rabbit pAb (CAB6945) at dilution of 1:25 (40x lens).



Immunohistochemistry of paraffin-embedded mouse stomach using PFKFB3 Rabbit pAb (CAB6945) at dilution of 1:25 (40x lens).