

# PLOD2 Rabbit Polyclonal Antibody



CAB6946

## Product Information

### Size:

20uL, 50uL, 100uL, 200uL

### Observed MW:

85kDa

### Calculated MW:

49kDa/84kDa/87kDa

### Applications:

WB IF

### Reactivity:

Rat

## Antibody Information

### Recommended dilutions:

WB 1:500 - 1:2000 IF 1:50 - 1:100

### Source:

Rabbit

### Isotype:

IgG

### Purification:

Affinity purification

## Protein Background

The protein encoded by this gene is a membrane-bound homodimeric enzyme that is localized to the cisternae of the rough endoplasmic reticulum. The enzyme (cofactors iron and ascorbate) catalyzes the hydroxylation of lysyl residues in collagen-like peptides. The resultant hydroxyllysyl groups are attachment sites for carbohydrates in collagen and thus are critical for the stability of intermolecular crosslinks. Some patients with Ehlers-Danlos syndrome type VIB have deficiencies in lysyl hydroxylase activity. Mutations in the coding region of this gene are associated with Bruck syndrome. Alternative splicing results in multiple transcript variants encoding different isoforms.

## Immunogen information

### Gene ID:

5352

### Uniprot

O00469

### Synonyms:

PLOD2; BRKS2; LH2; TLH

### Immunogen:

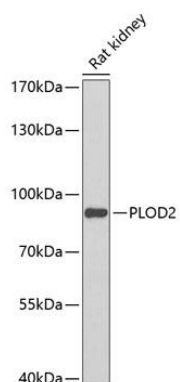
Recombinant fusion protein containing a sequence corresponding to amino acids 470-650 of human PLOD2 (NP\_891988.1).

### Storage:

Store at -20°C. Avoid freeze / thaw cycles. Buffer: PBS with 0.02% sodium azide, 50% glycerol, pH7.3.

## Product Images

---



Western blot analysis of extracts of rat kidney, using PLOD2 Antibody (CAB6946) at 1:1000 dilution. Secondary antibody: HRP Goat Anti-Rabbit IgG (H+L) (CABS014) at 1:10000 dilution. Lysates/proteins: 25ug per lane. Blocking buffer: 3% nonfat dry milk in TBST. Detection: ECL Basic Kit (CABM00020). Exposure time: 90s.