

MAP2K5 Rabbit Polyclonal Antibody



CAB6953

Product Information

Size:

20uL, 50uL, 100uL, 200uL

Observed MW:

50kDa

Calculated MW:

46kDa/48kDa/49kDa/50kDa

Applications:

WB IHC IF

Reactivity:

Human, Mouse, Rat

Protein Background

The protein encoded by this gene is a dual specificity protein kinase that belongs to the MAP kinase kinase family. This kinase specifically interacts with and activates MAPK7/ERK5. This kinase itself can be phosphorylated and activated by MAP3K3/MEKK3, as well as by atypical protein kinase C isoforms (aPKCs). The signal cascade mediated by this kinase is involved in growth factor stimulated cell proliferation and muscle cell differentiation. Three alternatively spliced transcript variants of this gene encoding distinct isoforms have been described.

Immunogen information

Gene ID:

5607

Uniprot

Q13163

Synonyms:

MAP2K5; HsT17454; MAPKK5; MEK5; PRKMK5

Antibody Information

Recommended dilutions:

WB 1:500 - 1:2000 IHC 1:50
- 1:200 IF 1:50 - 1:100

Source:

Rabbit

Isotype:

IgG

Purification:

Affinity purification

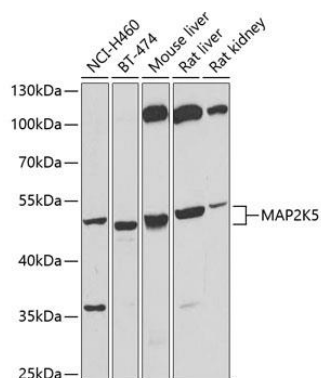
Immunogen:

Recombinant fusion protein containing a sequence corresponding to amino acids 1-190 of human MAP2K5 (NP_660143.1).

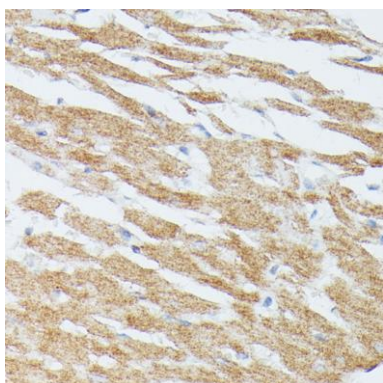
Storage:

Store at -20°C. Avoid freeze / thaw cycles. Buffer: PBS with 0.02% sodium azide, 50% glycerol, pH7.3.

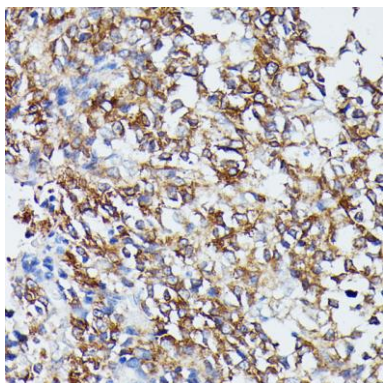
Product Images



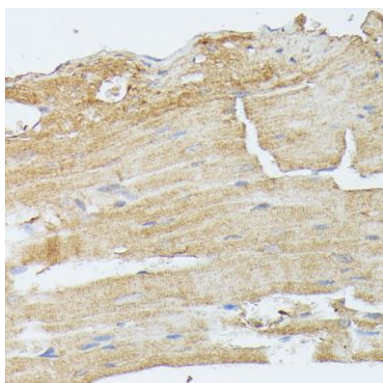
Western blot analysis of extracts of various cell lines, using MAP2K5 antibody (CAB6953) at 1:500 dilution. Secondary antibody: HRP Goat Anti-Rabbit IgG (H+L) (CABS014) at 1:10000 dilution. Lysates/proteins: 25ug per lane. Blocking buffer: 3% nonfat dry milk in TBST. Detection: ECL Basic Kit (CABM00020). Exposure time: 20s.



Immunohistochemistry of paraffin-embedded rat heart using MAP2K5 antibody (CAB6953) at dilution of 1:100 (40x lens).



Immunohistochemistry of paraffin-embedded human appendix using MAP2K5 antibody (CAB6953) at dilution of 1:100 (40x lens).



Immunohistochemistry of paraffin-embedded mouse heart using MAP2K5 antibody (CAB6953) at dilution of 1:100 (40x lens).