

# PSMD8 Rabbit Polyclonal Antibody



CAB6955

## Product Information

### Size:

20uL, 50uL, 100uL, 200uL

### Observed MW:

30-35kDa

### Calculated MW:

39kDa

### Applications:

WB IHC IF

### Reactivity:

Human, Mouse

## Antibody Information

### Recommended dilutions:

WB 1:500 - 1:2000 IHC 1:50  
- 1:200 IF 1:50 - 1:100

### Source:

Rabbit

### Isotype:

IgG

### Purification:

Affinity purification

## Protein Background

The 26S proteasome is a multicatalytic proteinase complex with a highly ordered structure composed of 2 complexes, a 20S core and a 19S regulator. The 20S core is composed of 4 rings of 28 non-identical subunits; 2 rings are composed of 7 alpha subunits and 2 rings are composed of 7 beta subunits. The 19S regulator is composed of a base, which contains 6 ATPase subunits and 2 non-ATPase subunits, and a lid, which contains up to 10 non-ATPase subunits. Proteasomes are distributed throughout eukaryotic cells at a high concentration and cleave peptides in an ATP/ubiquitin-dependent process in a non-lysosomal pathway. An essential function of a modified proteasome, the immunoproteasome, is the processing of class I MHC peptides. This gene encodes a non-ATPase subunit of the 19S regulator. A pseudogene has been identified on chromosome 1.

## Immunogen information

### Gene ID:

5714

### Uniprot

P48556

### Synonyms:

PSMD8; HEL-S-91n; HIP6; HYPF; Nin1p; Rpn12; S14; p31

### Immunogen:

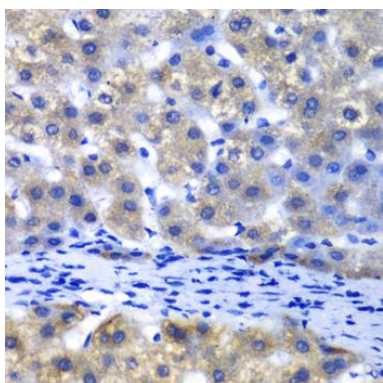
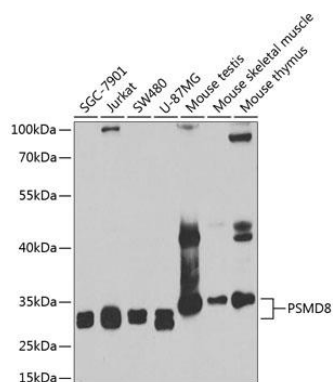
Recombinant fusion protein containing a sequence corresponding to amino acids 101-350 of human PSMD8 (NP\_002803.2).

### Storage:

Store at -20°C. Avoid freeze / thaw cycles. Buffer: PBS with 0.02% sodium azide, 50% glycerol, pH7.3.

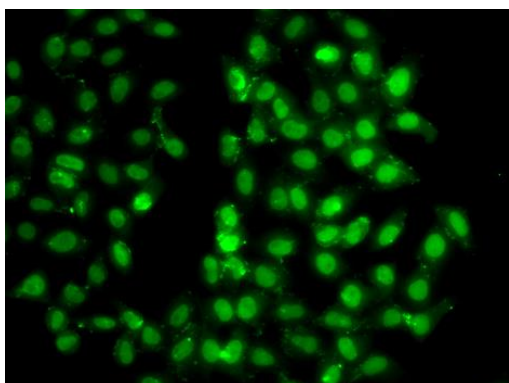
## Product Images

---



Western blot analysis of extracts of various cell lines, using PSMD8 antibody (CAB6955) at 1:1000 dilution. Secondary antibody: HRP Goat Anti-Rabbit IgG (H+L) (CABS014) at 1:10000 dilution. Lysates/proteins: 25ug per lane. Blocking buffer: 3% nonfat dry milk in TBST. Detection: ECL Basic Kit (CABM00020). Exposure time: 90s.

Immunohistochemistry of paraffin-embedded human liver tissue showing brown staining (PSMD8) and blue counterstain (nuclei).



Immunofluorescence analysis of U2OS cells using PSMD8 antibody (CAB6955).