

# RAD51C Rabbit Polyclonal Antibody



CAB6961

## Product Information

### Size:

20uL, 50uL, 100uL, 200uL

### Observed MW:

42kDa

### Calculated MW:

14kDa/42kDa

### Applications:

WB IHC

### Reactivity:

Human, Mouse

## Antibody Information

### Recommended dilutions:

WB 1:500 - 1:2000 IHC 1:50  
- 1:100

### Source:

Rabbit

### Isotype:

IgG

### Purification:

Affinity purification

## Protein Background

This gene is a member of the RAD51 family. RAD51 family members are highly similar to bacterial RecA and *Saccharomyces cerevisiae* Rad51 and are known to be involved in the homologous recombination and repair of DNA. This protein can interact with other RAD51 paralogs and is reported to be important for Holliday junction resolution. Mutations in this gene are associated with Fanconi anemia-like syndrome. This gene is one of four localized to a region of chromosome 17q23 where amplification occurs frequently in breast tumors. Overexpression of the four genes during amplification has been observed and suggests a possible role in tumor progression. Alternative splicing results in multiple transcript variants.

## Immunogen information

### Gene ID:

5889

### Uniprot

O43502

### Synonyms:

RAD51C; BROVCA3; FANCO; R51H3; RAD51L2

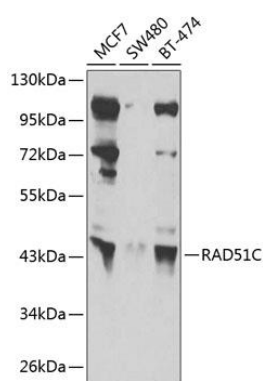
### Immunogen:

Recombinant fusion protein containing a sequence corresponding to amino acids 1-135 of human RAD51C (NP\_002867.1).

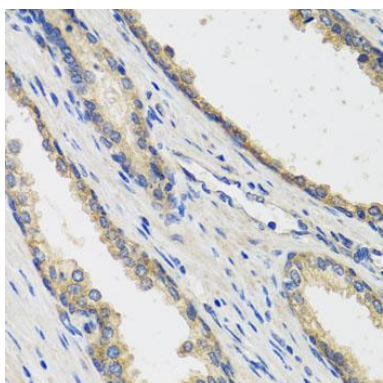
### Storage:

Store at -20°C. Avoid freeze / thaw cycles. Buffer: PBS with 0.02% sodium azide, 50% glycerol, pH7.3.

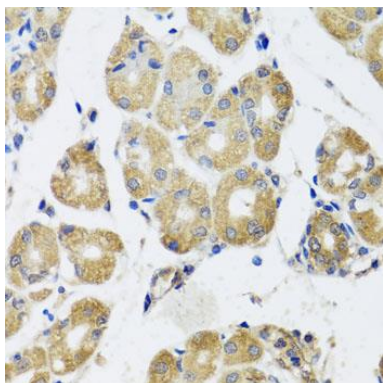
## Product Images



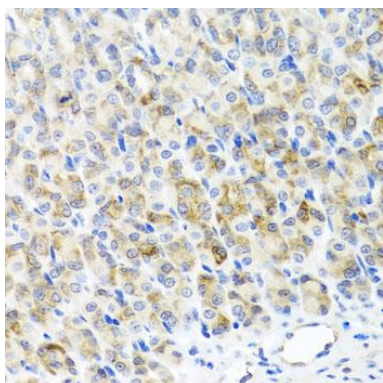
Western blot analysis of extracts of various cell lines, using RAD51C antibody (CAB6961) at 1:1000 dilution. Secondary antibody: HRP Goat Anti-Rabbit IgG (H+L) (CABS014) at 1:10000 dilution. Lysates/proteins: 25ug per lane. Blocking buffer: 3% nonfat dry milk in TBST. Detection: ECL Basic Kit (CABM00020). Exposure time: 10s.



Immunohistochemistry of paraffin-embedded human prostate using RAD51C antibody (CAB6961) at dilution of 1:100 (40x lens).



Immunohistochemistry of paraffin-embedded human stomach using RAD51C antibody (CAB6961) at dilution of 1:100 (40x lens).



Immunohistochemistry of paraffin-embedded mouse stomach using RAD51C antibody (CAB6961) at dilution of 1:100 (40x lens).