

RARRES2 Rabbit Polyclonal Antibody



CAB6963

Product Information

Size:

20uL, 50uL, 100uL, 200uL

Observed MW:

18kDa

Calculated MW:

18kDa

Applications:

WB IHC IF

Reactivity:

Human, Mouse, Rat

Protein Background

This gene encodes a secreted chemotactic protein that initiates chemotaxis via the ChemR23 G protein-coupled seven-transmembrane domain ligand. Expression of this gene is upregulated by the synthetic retinoid tazarotene and occurs in a wide variety of tissues. The active protein has several roles, including that as an adipokine and as an antimicrobial protein with activity against bacteria and fungi.

Immunogen information

Gene ID:

5919

Uniprot

Q99969

Synonyms:

RARRES2; HP10433; TIG2

Antibody Information

Recommended dilutions:

WB 1:500 - 1:2000 IHC 1:50
- 1:200 IF 1:50 - 1:100

Source:

Rabbit

Isotype:

IgG

Purification:

Affinity purification

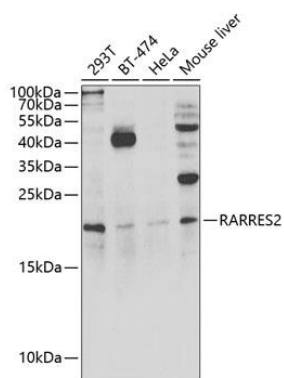
Immunogen:

Recombinant fusion protein containing a sequence corresponding to amino acids 17-163 of human RARRES2 (NP_002880.1).

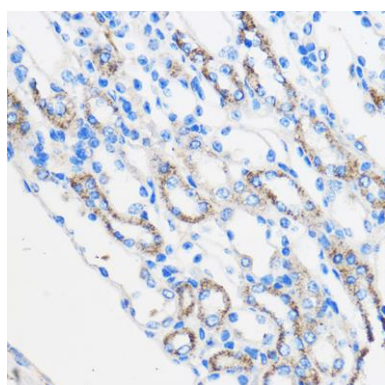
Storage:

Store at -20°C. Avoid freeze / thaw cycles. Buffer: PBS with 0.02% sodium azide, 50% glycerol, pH7.3.

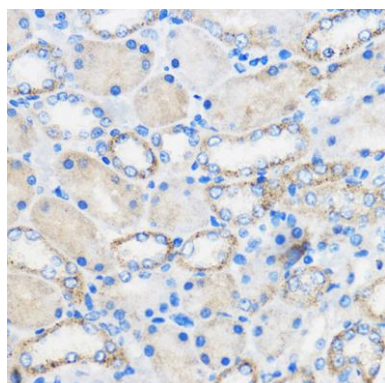
Product Images



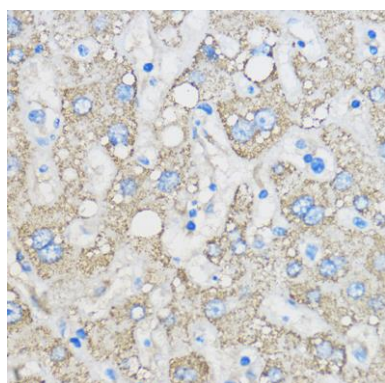
Western blot analysis of extracts of various cell lines, using RARRES2 antibody (CAB6963) at 1:1000 dilution. Secondary antibody: HRP Goat Anti-Rabbit IgG (H+L) (CABS014) at 1:10000 dilution. Lysates/proteins: 25ug per lane. Blocking buffer: 3% nonfat dry milk in TBST. Detection: ECL Enhanced Kit (CABM00021). Exposure time: 15min.



Immunohistochemistry of paraffin-embedded Mouse kidney using RARRES2 Rabbit pAb (CAB6963) at dilution of 1:50 (40x lens).



Immunohistochemistry of paraffin-embedded Rat kidney using RARRES2 Rabbit pAb (CAB6963) at dilution of 1:50 (40x lens).



Immunohistochemistry of paraffin-embedded Human liver using RARRES2 Rabbit pAb (CAB6963) at dilution of 1:50 (40x lens).