

# RBBP6 Rabbit Polyclonal Antibody



CAB6966

## Product Information

### Size:

20uL, 50uL, 100uL, 200uL

### Observed MW:

160kDa

### Calculated MW:

13kDa/106kDa/197kDa/201kDa

### Applications:

IF

### Reactivity:

Human

## Protein Background

The retinoblastoma tumor suppressor (pRB) protein binds with many other proteins. In various human cancers, pRB suppresses cellular proliferation and is inactivated. Cell cycle-dependent phosphorylation regulates the activity of pRB. This gene encodes a protein which binds to underphosphorylated but not phosphorylated pRB. Multiple alternatively spliced transcript variants that encode different isoforms have been found for this gene.

## Immunogen information

### Gene ID:

5930

### Uniprot

Q7Z6E9

### Synonyms:

RBBP6; MY038; P2P-R; PACT; RBQ-1; SNAMA

## Antibody Information

### Recommended dilutions:

IF 1:50 - 1:200

### Source:

Rabbit

### Isotype:

IgG

### Purification:

Affinity purification

### Immunogen:

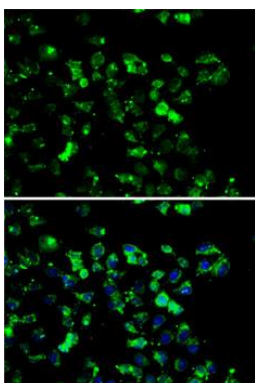
Recombinant fusion protein containing a sequence corresponding to amino acids 1-118 of human RBBP6 (NP\_116015.2).

### Storage:

Store at -20°C. Avoid freeze / thaw cycles. Buffer: PBS with 0.02% sodium azide, 50% glycerol, pH7.3.

## Product Images

---



Immunofluorescence analysis of A-549 cells using RBBP6 antibody (CAB6966). Blue: DAPI for nuclear staining.