

CCL8 Rabbit Polyclonal Antibody



CAB6977

Product Information

Size:

20uL, 50uL, 100uL, 200uL

Observed MW:

Refer to figures

Calculated MW:

11kDa

Applications:

WB IHC IF

Reactivity:

Human, Mouse

Antibody Information

Recommended dilutions:

WB 1:500 - 1:2000 IHC 1:50
- 1:100 IF 1:50 - 1:100

Source:

Rabbit

Isotype:

IgG

Purification:

Affinity purification

Protein Background

This antimicrobial gene is one of several chemokine genes clustered on the q-arm of chromosome 17. Chemokines form a superfamily of secreted proteins involved in immunoregulatory and inflammatory processes. The superfamily is divided into four subfamilies based on the arrangement of N-terminal cysteine residues of the mature peptide. This chemokine is a member of the CC subfamily which is characterized by two adjacent cysteine residues. This cytokine displays chemotactic activity for monocytes, lymphocytes, basophils and eosinophils. By recruiting leukocytes to sites of inflammation this cytokine may contribute to tumor-associated leukocyte infiltration and to the antiviral state against HIV infection.

Immunogen information

Gene ID:

6355

Uniprot

P80075

Synonyms:

CCL8; HC14; MCP-2; MCP2; SCYA10; SCYA8

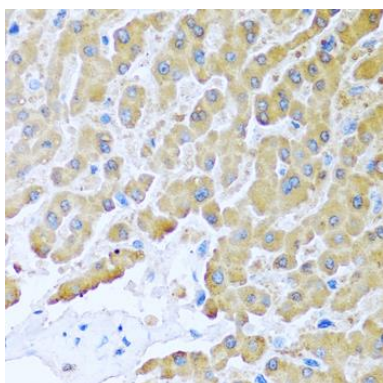
Immunogen:

Recombinant fusion protein containing a sequence corresponding to amino acids 23-99 of human CCL8 (NP_005614.2).

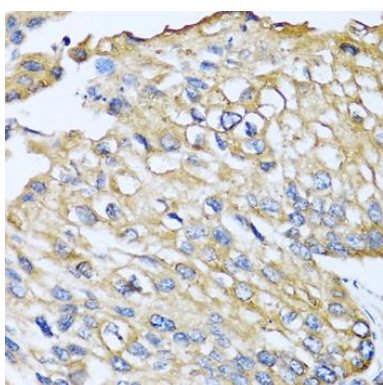
Storage:

Store at -20°C. Avoid freeze / thaw cycles. Buffer: PBS with 0.02% sodium azide, 50% glycerol, pH7.3.

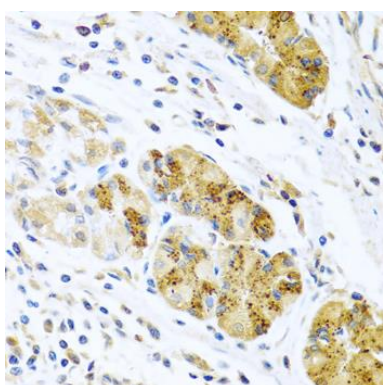
Product Images



Immunohistochemistry of paraffin-embedded human liver using CCL8 antibody (CAB6977) at dilution of 1:100 (40x lens).



Immunohistochemistry of paraffin-embedded human prostate cancer using CCL8 antibody (CAB6977) at dilution of 1:100 (40x lens).



Immunohistochemistry of paraffin-embedded human stomach using CCL8 antibody (CAB6977) at dilution of 1:100 (40x lens).