

SRSF4 Rabbit Polyclonal Antibody



CAB6978

Product Information

Size:

20uL, 50uL, 100uL, 200uL

Observed MW:

Refer to figures

Calculated MW:

56kDa

Applications:

IF

Reactivity:

Human

Antibody Information

Recommended dilutions:

IF 1:50 - 1:200

Source:

Rabbit

Isotype:

IgG

Purification:

Affinity purification

Protein Background

This gene encodes a member of the arginine/serine-rich splicing factor family. The encoded protein likely functions in mRNA processing.

Immunogen information

Gene ID:

6429

Uniprot

Q08170

Synonyms:

SRSF4; SFRS4; SRP75

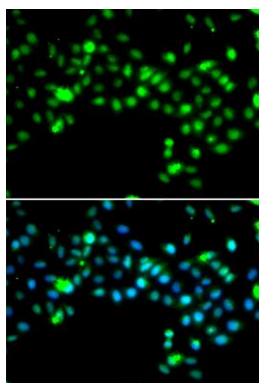
Immunogen:

Recombinant fusion protein containing a sequence corresponding to amino acids 1-180 of human SRSF4 (NP_005617.2).

Storage:

Store at -20°C. Avoid freeze / thaw cycles. Buffer: PBS with 0.02% sodium azide, 50% glycerol, pH7.3.

Product Images



Immunofluorescence analysis of MCF-7 cells using SRSF4 antibody (CAB6978). Blue: DAPI for nuclear staining.