

SGCB Rabbit Polyclonal Antibody



CAB6979

Product Information

Size:

20uL, 50uL, 100uL, 200uL

Observed MW:

45kDa

Calculated MW:

26kDa/34kDa

Applications:

WB IHC

Reactivity:

Human, Mouse, Rat

Protein Background

This gene encodes a member of the sarcoglycan family. Sarcoglycans are transmembrane components in the dystrophin-glycoprotein complex which help stabilize the muscle fiber membranes and link the muscle cytoskeleton to the extracellular matrix. Mutations in this gene have been associated with limb-girdle muscular dystrophy.

Immunogen information

Gene ID:

6443

Uniprot

Q16585

Synonyms:

SGCB; A3b; LGMD2E; SGC

Antibody Information

Recommended dilutions:

WB 1:500 - 1:2000 IHC 1:50
- 1:100

Source:

Rabbit

Isotype:

IgG

Purification:

Affinity purification

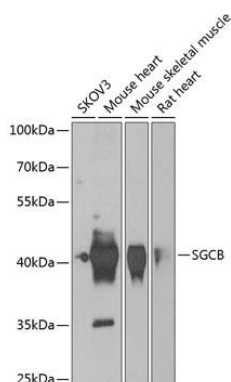
Immunogen:

Recombinant fusion protein containing a sequence corresponding to amino acids 94-318 of human SGCB (NP_000223.1).

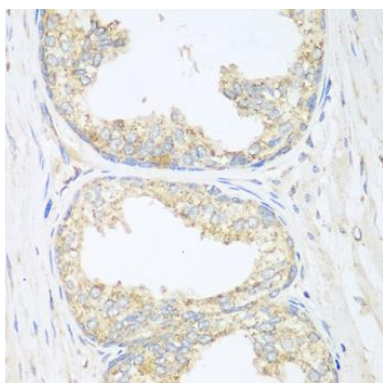
Storage:

Store at -20°C. Avoid freeze / thaw cycles. Buffer: PBS with 0.02% sodium azide, 50% glycerol, pH7.3.

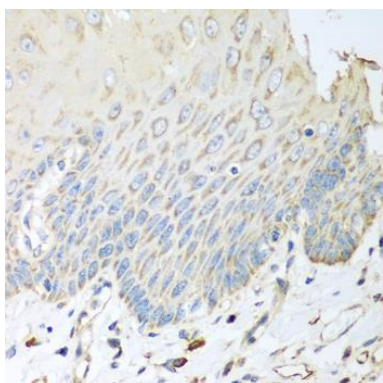
Product Images



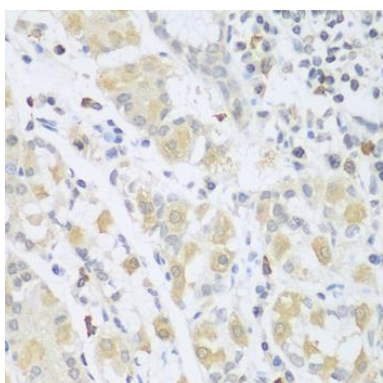
Western blot analysis of extracts of various cell lines, using SGCB antibody (CAB6979) at 1:1000 dilution. Secondary antibody: HRP Goat Anti-Rabbit IgG (H+L) (CABS014) at 1:10000 dilution. Lysates/proteins: 25ug per lane. Blocking buffer: 3% nonfat dry milk in TBST. Detection: ECL Basic Kit (CABM00020). Exposure time: 90s.



Immunohistochemistry of paraffin-embedded human prostate using SGCB antibody (CAB6979) at dilution of 1:100 (40x lens).



Immunohistochemistry of paraffin-embedded human esophagus using SGCB antibody (CAB6979) at dilution of 1:100 (40x lens).



Immunohistochemistry of paraffin-embedded human stomach using SGCB antibody (CAB6979) at dilution of 1:100 (40x lens).