

GLUT1 Rabbit Polyclonal Antibody



CAB6982

Product Information

Size:

20uL, 50uL, 100uL, 200uL

Observed MW:

45-60KDa

Calculated MW:

54kDa

Applications:

WB IHC

Reactivity:

Human, Mouse, Rat

Protein Background

This gene encodes a major glucose transporter in the mammalian blood-brain barrier. The encoded protein is found primarily in the cell membrane and on the cell surface, where it can also function as a receptor for human T-cell leukemia virus (HTLV) I and II. Mutations in this gene have been found in a family with paroxysmal exertion-induced dyskinesia.

Immunogen information

Gene ID:

6513

Uniprot

P11166

Synonyms:

SLC2A1; CSE; DYT17; DYT18; DYT9; EIG12; GLUT; GLUT-1; GLUT1; GLUT1DS; HTLVRI; PED; SDCHCN

Antibody Information

Recommended dilutions:

WB 1:500 - 1:2000 IHC 1:50
- 1:200

Source:

Rabbit

Isotype:

IgG

Purification:

Affinity purification

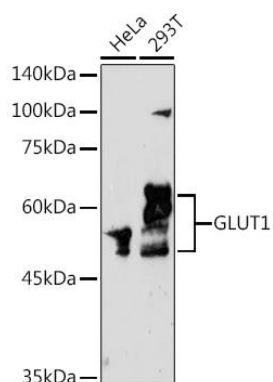
Immunogen:

Recombinant fusion protein containing a sequence corresponding to amino acids 210-310 of human GLUT1 (NP_006507.2).

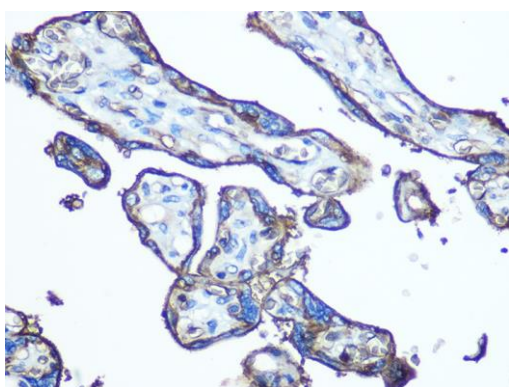
Storage:

Store at -20°C. Avoid freeze / thaw cycles. Buffer: PBS with 0.02% sodium azide, 50% glycerol, pH7.3.

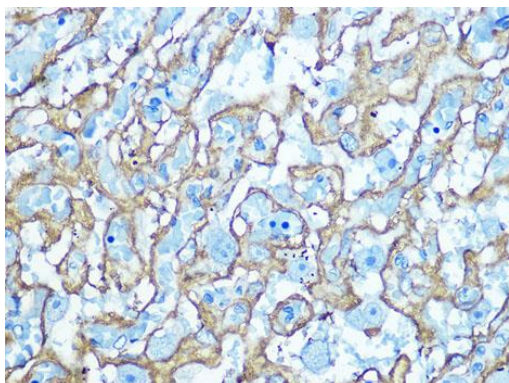
Product Images



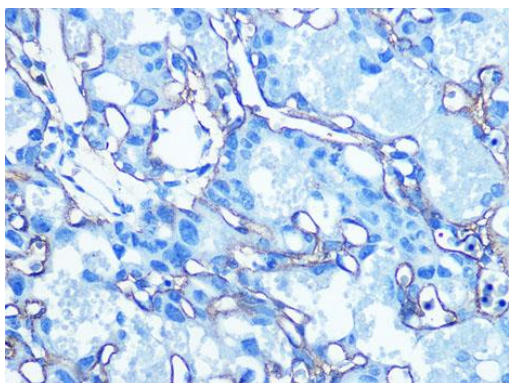
Western blot analysis of extracts of various cell lines, using GLUT1 Rabbit pAb (CAB6982) at 1:1000 dilution. Secondary antibody: HRP Goat Anti-Rabbit IgG (H+L) (CABS014) at 1:10000 dilution. Lysates/proteins: 25ug per lane. Blocking buffer: 3% nonfat dry milk in TBST. Detection: ECL Enhanced Kit (CABM00021). Exposure time: 180s.



Immunohistochemistry of paraffin-embedded Human placenta using GLUT1 antibody (CAB6982) at dilution of 1:100 (40x lens).



Immunohistochemistry of paraffin-embedded Rat placenta using GLUT1 antibody (CAB6982) at dilution of 1:100 (40x lens).



Immunohistochemistry of paraffin-embedded Mouse placenta using GLUT1 antibody (CAB6982) at dilution of 1:100 (40x lens).