

SNRPD2 Rabbit Polyclonal Antibody



CAB6983

Product Information

Size:

20uL, 50uL, 100uL, 200uL

Observed MW:

13kDa

Calculated MW:

12kDa/13kDa

Applications:

WB IHC IF

Reactivity:

Human, Mouse, Rat

Protein Background

The protein encoded by this gene belongs to the small nuclear ribonucleoprotein core protein family. It is required for pre-mRNA splicing and small nuclear ribonucleoprotein biogenesis. Multiple transcript variants encoding different isoforms have been found for this gene.

Immunogen information

Gene ID:

6633

Uniprot

P62316

Synonyms:

SNRPD2; SMD2; SNRPD1; Sm-D2

Antibody Information

Recommended dilutions:

WB 1:500 - 1:2000 IHC 1:50
- 1:200 IF 1:50 - 1:200

Source:

Rabbit

Isotype:

IgG

Purification:

Affinity purification

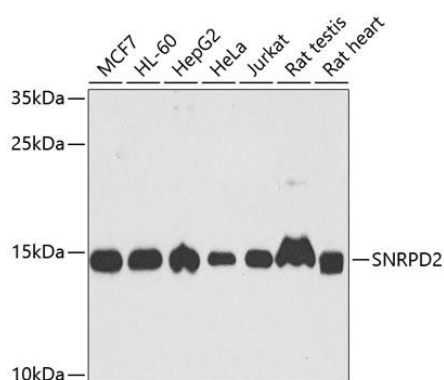
Immunogen:

Recombinant fusion protein containing a sequence corresponding to amino acids 1-118 of human SNRPD2 (NP_004588.1).

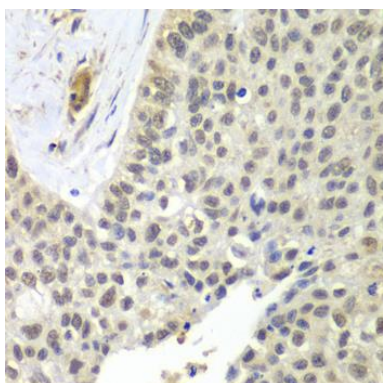
Storage:

Store at -20°C. Avoid freeze / thaw cycles. Buffer: PBS with 0.02% sodium azide, 50% glycerol, pH7.3.

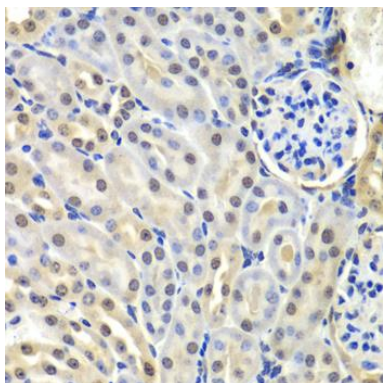
Product Images



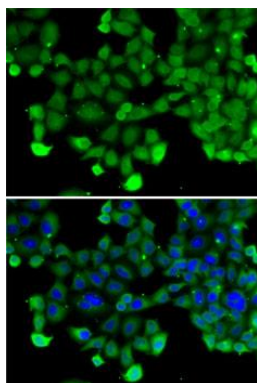
Western blot analysis of extracts of various cell lines, using SNRPD2 antibody (CAB6983) at 1:1000 dilution. Secondary antibody: HRP Goat Anti-Rabbit IgG (H+L) (CABS014) at 1:10000 dilution. Lysates/proteins: 25ug per lane. Blocking buffer: 3% nonfat dry milk in TBST. Detection: ECL Basic Kit (CABM00020). Exposure time: 30s.



Immunohistochemistry of paraffin-embedded human lung cancer using SNRPD2 antibody (CAB6983) at dilution of 1:100 (40x lens).



Immunohistochemistry of paraffin-embedded mouse kidney using SNRPD2 antibody (CAB6983) at dilution of 1:100 (40x lens).



Immunofluorescence analysis of A-549 cells using SNRPD2 antibody (CAB6983). Blue: DAPI for nuclear staining.