

SOX5 Rabbit Polyclonal Antibody



CAB6985

Product Information

Size:

20uL, 50uL, 100uL, 200uL

Observed MW:

70kDa

Calculated MW:

41kDa/71kDa/82kDa/84kDa

Applications:

WB IHC IF

Reactivity:

Human, Mouse, Rat

Protein Background

This gene encodes a member of the SOX (SRY-related HMG-box) family of transcription factors involved in the regulation of embryonic development and in the determination of the cell fate. The encoded protein may act as a transcriptional regulator after forming a protein complex with other proteins. The encoded protein may play a role in chondrogenesis. A pseudogene of this gene is located on chromosome 8. Multiple transcript variants encoding distinct isoforms have been identified for this gene.

Immunogen information

Gene ID:

6660

Uniprot

P35711

Synonyms:

SOX5; L-SOX5; L-SOX5B; L-SOX5F; LAMSHF; SRY-box 5

Antibody Information

Recommended dilutions:

WB 1:500 - 1:2000 IHC 1:50
- 1:200 IF 1:50 - 1:100

Source:

Rabbit

Isotype:

IgG

Purification:

Affinity purification

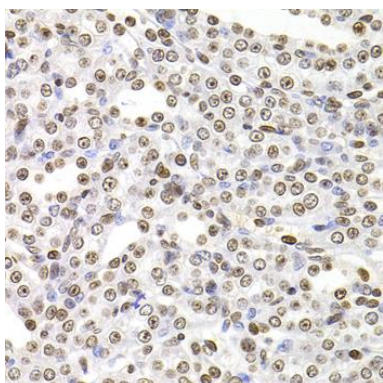
Immunogen:

Recombinant fusion protein containing a sequence corresponding to amino acids 1-120 of human SOX5 (NP_694534.1).

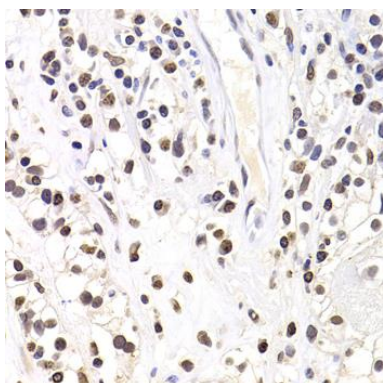
Storage:

Store at -20°C. Avoid freeze / thaw cycles. Buffer: PBS with 0.02% sodium azide, 50% glycerol, pH7.3.

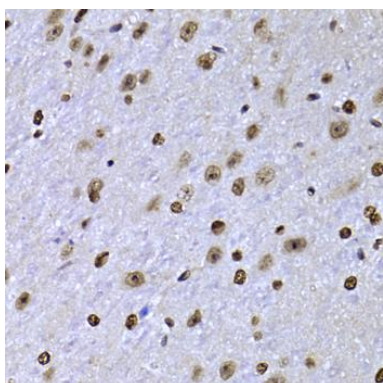
Product Images



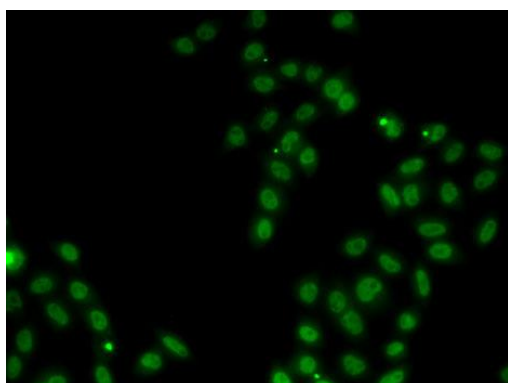
Immunohistochemistry of paraffin-embedded rat kidney using SOX5 antibody (CAB6985) at dilution of 1:100 (40x lens).



Immunohistochemistry of paraffin-embedded human kidney cancer using SOX5 antibody (CAB6985) at dilution of 1:100 (40x lens).



Immunohistochemistry of paraffin-embedded mouse brain using SOX5 antibody (CAB6985) at dilution of 1:100 (40x lens).



Immunofluorescence analysis of MCF7 cells using SOX5 antibody (CAB6985).