

# SSBP1 Rabbit Polyclonal Antibody



CAB6987

## Product Information

### Size:

20uL, 50uL, 100uL, 200uL

### Observed MW:

14kDa

### Calculated MW:

17kDa

### Applications:

WB IHC IF IP

### Reactivity:

Human, Mouse

## Protein Background

### Immunogen information

#### Gene ID:

6742

#### Uniprot

Q04837

#### Synonyms:

SSBP1; Mt-SSB; SOSS-B1; SSBP; mtSSB

#### Immunogen:

Recombinant fusion protein containing a sequence corresponding to amino acids 1-148 of human SSBP1 (NP\_001243442.1).

## Antibody Information

### Recommended dilutions:

WB 1:500 - 1:2000 IHC 1:50  
- 1:200 IF 1:50 - 1:100 IP  
1:50 - 1:200

### Source:

Rabbit

### Isotype:

IgG

### Purification:

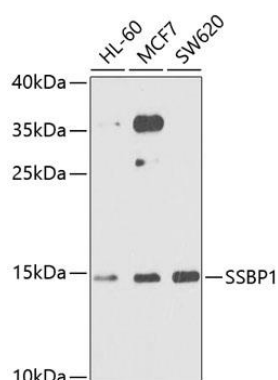
Affinity purification

### Storage:

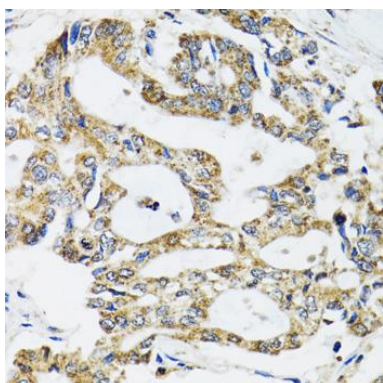
Store at -20°C. Avoid freeze / thaw cycles. Buffer: PBS with 0.02% sodium azide, 50% glycerol, pH7.3.

## Product Images

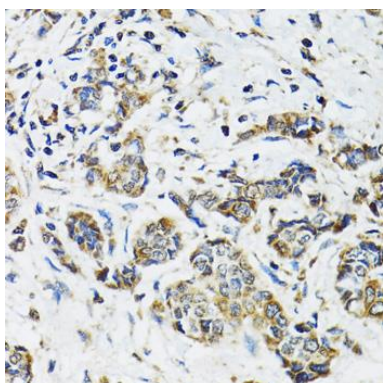
---



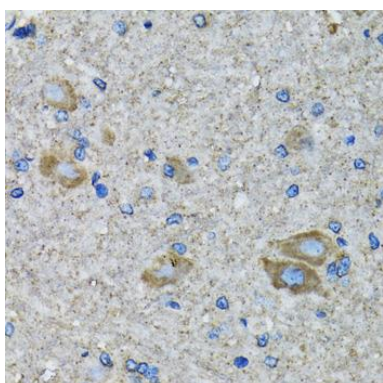
Western blot analysis of extracts of various cell lines, using SSBP1 antibody (CAB6987) at 1:1000 dilution. Secondary antibody: HRP Goat Anti-Rabbit IgG (H+L) (CABS014) at 1:10000 dilution. Lysates/proteins: 25ug per lane. Blocking buffer: 3% nonfat dry milk in TBST. Detection: ECL Basic Kit (CABM00020). Exposure time: 30s.



Immunohistochemistry of paraffin-embedded human colon carcinoma using SSBP1 antibody (CAB6987) at dilution of 1:100 (40x lens).



Immunohistochemistry of paraffin-embedded human breast cancer using SSBP1 antibody (CAB6987) at dilution of 1:100 (40x lens).



Immunohistochemistry of paraffin-embedded mouse spinal cord using SSBP1 antibody (CAB6987) at dilution of 1:100 (40x lens).