

# STAT4 Rabbit Polyclonal Antibody



CAB6991

## Product Information

### Size:

20uL, 50uL, 100uL, 200uL

### Observed MW:

76kDa

### Calculated MW:

85kDa

### Applications:

WB IHC IF

### Reactivity:

Human, Mouse, Rat

## Antibody Information

### Recommended dilutions:

WB 1:500 - 1:2000 IHC 1:50  
- 1:200 IF 1:50 - 1:100

### Source:

Rabbit

### Isotype:

IgG

### Purification:

Affinity purification

## Protein Background

The protein encoded by this gene is a member of the STAT family of transcription factors. In response to cytokines and growth factors, STAT family members are phosphorylated by the receptor associated kinases, and then form homo- or heterodimers that translocate to the cell nucleus where they act as transcription activators. This protein is essential for mediating responses to IL12 in lymphocytes, and regulating the differentiation of T helper cells. Mutations in this gene may be associated with systemic lupus erythematosus and rheumatoid arthritis. Alternate splicing results in multiple transcript variants that encode the same protein.

## Immunogen information

### Gene ID:

6775

### Uniprot

Q14765

### Synonyms:

STAT4; SLEB11

### Immunogen:

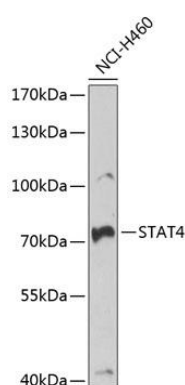
Recombinant fusion protein containing a sequence corresponding to amino acids 569-748 of human STAT4 (NP\_003142.1).

### Storage:

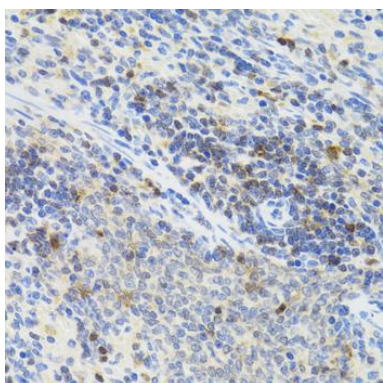
Store at -20°C. Avoid freeze / thaw cycles. Buffer: PBS with 0.02% sodium azide, 50% glycerol, pH7.3.

## Product Images

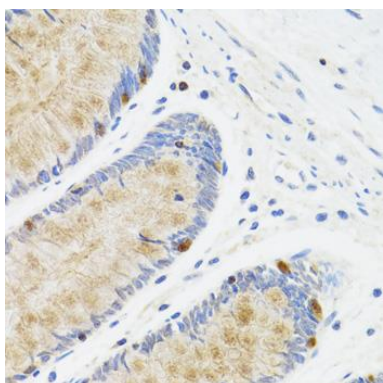
---



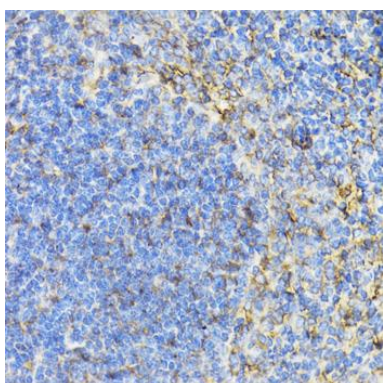
Western blot analysis of extracts of NCI-H460 cells, using STAT4 antibody (CAB6991) at 1:1000 dilution. Secondary antibody: HRP Goat Anti-Rabbit IgG (H+L) (CABS014) at 1:10000 dilution. Lysates/proteins: 25ug per lane. Blocking buffer: 3% nonfat dry milk in TBST. Detection: ECL Basic Kit (CABM00020). Exposure time: 90s.



Immunohistochemistry of paraffin-embedded rat spleen using STAT4 antibody (CAB6991) at dilution of 1:100 (40x lens).



Immunohistochemistry of paraffin-embedded human rectum using STAT4 antibody (CAB6991) at dilution of 1:100 (40x lens).



Immunohistochemistry of paraffin-embedded mouse spleen using STAT4 antibody (CAB6991) at dilution of 1:100 (40x lens).