

STK3 Rabbit Polyclonal Antibody



CAB6992

Product Information

Size:

20uL, 50uL, 100uL, 200uL

Observed MW:

65kDa, 37kDa

Calculated MW:

56kDa/59kDa

Applications:

WB IHC IF

Reactivity:

Human, Mouse, Rat

Protein Background

This gene encodes a serine/threonine protein kinase activated by proapoptotic molecules indicating the encoded protein functions as a growth suppressor. Cleavage of the protein product by caspase removes the inhibitory C-terminal portion. The N-terminal portion is transported to the nucleus where it homodimerizes to form the active kinase which promotes the condensation of chromatin during apoptosis. Multiple transcript variants encoding different isoforms have been found for this gene.

Immunogen information

Gene ID:

6788

Uniprot

Q13188

Synonyms:

KRS1; MST2; STK3

Antibody Information

Recommended dilutions:

WB 1:500 - 1:2000 IHC 1:50
- 1:100 IF 1:50 - 1:100

Source:

Rabbit

Isotype:

IgG

Purification:

Affinity purification

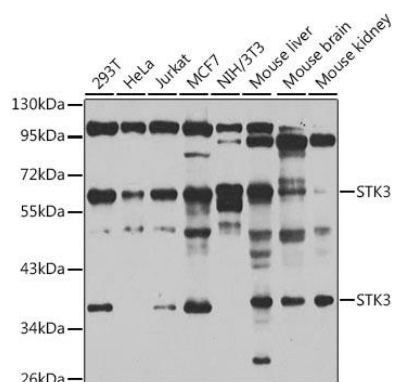
Immunogen:

Recombinant fusion protein containing a sequence corresponding to amino acids 323-450 of human STK3 (NP_006272.2).

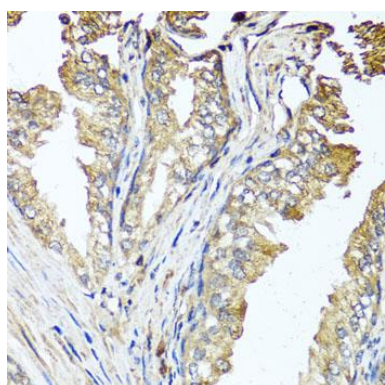
Storage:

Store at -20°C. Avoid freeze / thaw cycles. Buffer: PBS with 0.02% sodium azide, 50% glycerol, pH7.3.

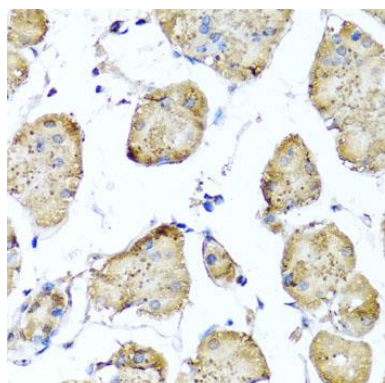
Product Images



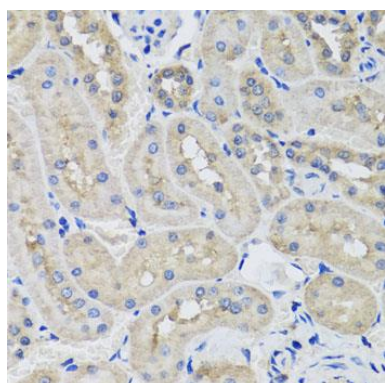
Western blot analysis of extracts of various cell lines, using STK3 antibody (CAB6992) at 1:1000 dilution. Secondary antibody: HRP Goat Anti-Rabbit IgG (H+L) (CABS014) at 1:10000 dilution. Lysates/proteins: 25ug per lane. Blocking buffer: 3% nonfat dry milk in TBST. Detection: ECL Basic Kit (CABM00020). Exposure time: 60s.



Immunohistochemistry of paraffin-embedded human prostate using STK3 antibody (CAB6992) at dilution of 1:100 (40x lens).



Immunohistochemistry of paraffin-embedded human stomach using STK3 antibody (CAB6992) at dilution of 1:100 (40x lens).



Immunohistochemistry of paraffin-embedded rat kidney using STK3 antibody (CAB6992) at dilution of 1:100 (40x lens).