

ZNF148 Rabbit Polyclonal Antibody



CAB7001

Product Information

Size:

20uL, 50uL, 100uL, 200uL

Observed MW:

105kDa

Calculated MW:

14kDa/88kDa

Applications:

WB IHC IF

Reactivity:

Human, Mouse, Rat

Antibody Information

Recommended dilutions:

WB 1:500 - 1:1000 IHC 1:50
- 1:100 IF 1:20 - 1:100

Source:

Rabbit

Isotype:

IgG

Purification:

Affinity purification

Protein Background

The protein encoded by this gene is a member of the Kruppel family of zinc finger DNA binding proteins. The encoded protein activates transcription of the T-cell receptor and intestinal alkaline phosphatase genes but represses transcription of the ornithine decarboxylase, vimentin, gastrin, stomelysin, and enolase genes. Increased expression of this gene results in decreased patient survival rates from colorectal cancer, while mutations in this gene have been associated with global developmental delay, hypoplastic corpus callosum, and dysmorphic facies.

Immunogen information

Gene ID:

7707

Uniprot

Q9UQR1

Synonyms:

ZNF148; BERF-1; BFCOL1; GDACCF; HT-BETA; ZBP-89; ZFP148;
pHZ-52

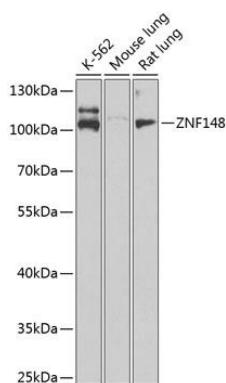
Immunogen:

Recombinant fusion protein containing a sequence corresponding to amino acids 690-794 of human ZNF148 (NP_068799.2).

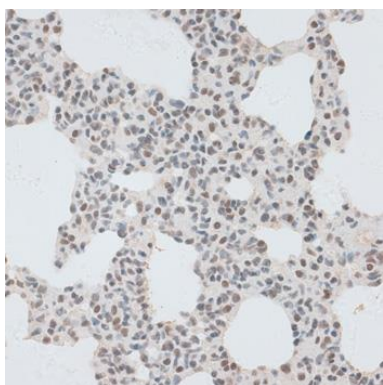
Storage:

Store at -20°C. Avoid freeze / thaw cycles. Buffer: PBS with 0.02% sodium azide, 50% glycerol, pH7.3.

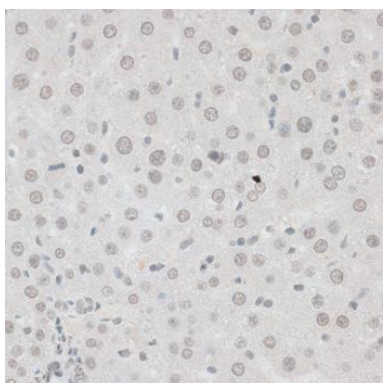
Product Images



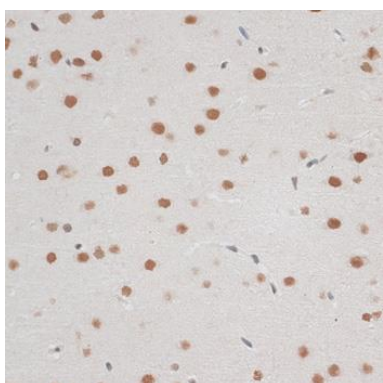
Western blot analysis of extracts of various cell lines, using ZNF148 Antibody (CAB7001) at 1:1000 dilution. Secondary antibody: HRP Goat Anti-Rabbit IgG (H+L) (CABS014) at 1:10000 dilution. Lysates/proteins: 25ug per lane. Blocking buffer: 3% nonfat dry milk in TBST. Detection: ECL Basic Kit (CABM00020). Exposure time: 60s.



Immunohistochemistry of paraffin-embedded rat lung using ZNF148 antibody (CAB7001) at dilution of 1:100 (40x lens).



Immunohistochemistry of paraffin-embedded rat liver using ZNF148 antibody (CAB7001) at dilution of 1:100 (40x lens).



Immunohistochemistry of paraffin-embedded rat brain using ZNF148 antibody (CAB7001) at dilution of 1:100 (40x lens).