

# MANF Rabbit Polyclonal Antibody



CAB7005

## Product Information

### Size:

20uL, 50uL, 100uL, 200uL

### Observed MW:

16kDa

### Calculated MW:

20kDa

### Applications:

WB IHC IF

### Reactivity:

Human, Mouse, Rat

## Antibody Information

### Recommended dilutions:

WB 1:500 - 1:2000 IHC 1:50  
- 1:200 IF 1:50 - 1:100

### Source:

Rabbit

### Isotype:

IgG

### Purification:

Affinity purification

## Protein Background

The protein encoded by this gene is localized in the endoplasmic reticulum (ER) and golgi, and is also secreted. Reducing expression of this gene increases susceptibility to ER stress-induced death and results in cell proliferation. Activity of this protein is important in promoting the survival of dopaminergic neurons. The presence of polymorphisms in the N-terminal arginine-rich region, including a specific mutation that changes an ATG start codon to AGG, have been reported in a variety of solid tumors; however, these polymorphisms were later shown to exist in normal tissues and are thus no longer thought to be tumor-related.

## Immunogen information

### Gene ID:

7873

### Uniprot

P55145

### Synonyms:

MANF; ARMET; ARP

### Immunogen:

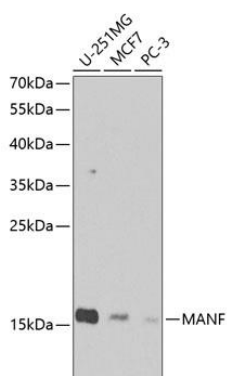
Recombinant fusion protein containing a sequence corresponding to amino acids 25-182 of human MANF (NP\_006001.4).

### Storage:

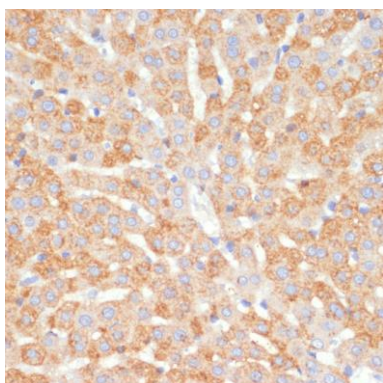
Store at -20°C. Avoid freeze / thaw cycles. Buffer: PBS with 0.02% sodium azide, 50% glycerol, pH7.3.

## Product Images

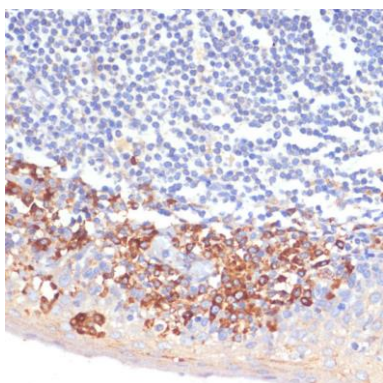
---



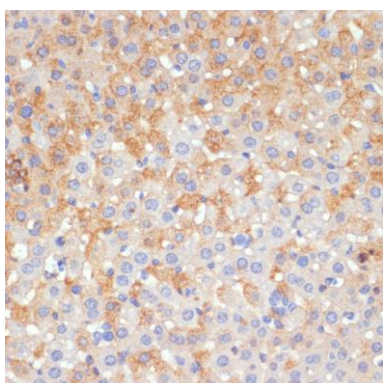
Western blot analysis of extracts of various cell lines, using MANF Antibody (CAB7005) at 1:1000 dilution. Secondary antibody: HRP Goat Anti-Rabbit IgG (H+L) (CABS014) at 1:10000 dilution. Lysates/proteins: 25ug per lane. Blocking buffer: 3% nonfat dry milk in TBST. Detection: ECL Enhanced Kit (CABM00021). Exposure time: 60s.



Immunohistochemistry of paraffin-embedded rat liver using MANF antibody (CAB7005) at dilution of 1:100 (40x lens).



Immunohistochemistry of paraffin-embedded human tonsil using MANF antibody (CAB7005) at dilution of 1:100 (40x lens).



Immunohistochemistry of paraffin-embedded mouse liver using MANF antibody (CAB7005) at dilution of 1:100 (40x lens).