

NAA10 Rabbit Polyclonal Antibody



CAB7009

Product Information

Size:

20uL, 50uL, 100uL, 200uL

Observed MW:

26kDa

Calculated MW:

24kDa/26kDa

Applications:

WB IHC IF

Reactivity:

Human, Mouse, Rat

Antibody Information

Recommended dilutions:

WB 1:500 - 1:2000 IHC 1:50
- 1:200 IF 1:50 - 1:100

Source:

Rabbit

Isotype:

IgG

Purification:

Affinity purification

Protein Background

N-alpha-acetylation is among the most common post-translational protein modifications in eukaryotic cells. This process involves the transfer of an acetyl group from acetyl-coenzyme A to the alpha-amino group on a nascent polypeptide and is essential for normal cell function. This gene encodes an N-terminal acetyltransferase that functions as the catalytic subunit of the major amino-terminal acetyltransferase A complex. Mutations in this gene are the cause of Ogden syndrome. Alternate splicing results in multiple transcript variants.

Immunogen information

Gene ID:

8260

Uniprot

P41227

Synonyms:

NAA10; ARD1; ARD1A; ARD1P; DXS707; MCOPS1; NATD; OGDNS;
TE2

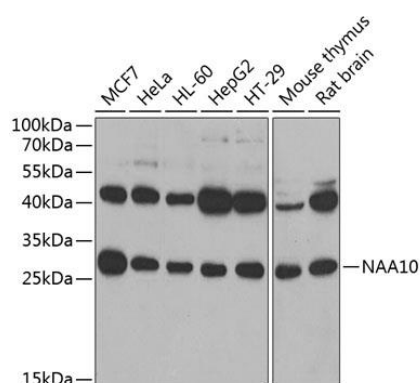
Immunogen:

Recombinant fusion protein containing a sequence corresponding to amino acids 161-235 of human NAA10 (NP_003482.1).

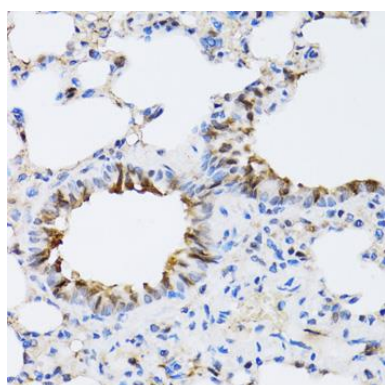
Storage:

Store at -20°C. Avoid freeze / thaw cycles. Buffer: PBS with 0.02% sodium azide, 50% glycerol, pH7.3.

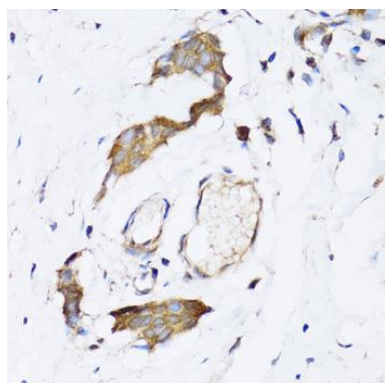
Product Images



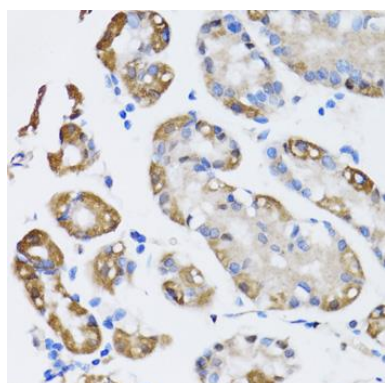
Western blot analysis of extracts of various cell lines, using NAA10 antibody (CAB7009) at 1:1000 dilution. Secondary antibody: HRP Goat Anti-Rabbit IgG (H+L) (CABS014) at 1:10000 dilution. Lysates/proteins: 25ug per lane. Blocking buffer: 3% nonfat dry milk in TBST. Detection: ECL Basic Kit (CABM00020). Exposure time: 10s.



Immunohistochemistry of paraffin-embedded rat lung using NAA10 antibody (CAB7009) at dilution of 1:100 (40x lens).



Immunohistochemistry of paraffin-embedded human breast cancer using NAA10 antibody (CAB7009) at dilution of 1:100 (40x lens).



Immunohistochemistry of paraffin-embedded human stomach using NAA10 antibody (CAB7009) at dilution of 1:100 (40x lens).