

NPFF Rabbit Polyclonal Antibody



CAB7020

Product Information

Size:

20uL, 50uL, 100uL, 200uL

Observed MW:

12kDa

Calculated MW:

12kDa

Applications:

WB

Reactivity:

Human, Rat

Protein Background

This gene encodes a member of the FMRFamide related peptide (FARP) family of neuropeptides. The encoded preproprotein is proteolytically processed to generate multiple amidated peptides. These peptides may play a role in the regulation of heart rate and blood pressure and the modulation of morphine-induced antinociception. Patients with hypertension exhibit decreased expression of the encoded protein. Alternative splicing results in multiple transcript variants, at least one of which encodes an isoform that is proteolytically processed.

Immunogen information

Gene ID:

8620

Uniprot

O15130

Synonyms:

NPFF; FMRFAL

Antibody Information

Recommended dilutions:

WB 1:500 - 1:2000

Source:

Rabbit

Isotype:

IgG

Purification:

Affinity purification

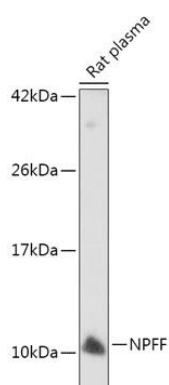
Immunogen:

Recombinant fusion protein containing a sequence corresponding to amino acids 34-113 of human NPFF (NP_003708.1).

Storage:

Store at -20°C. Avoid freeze / thaw cycles. Buffer: PBS with 0.02% sodium azide, 50% glycerol, pH7.3.

Product Images



Western blot analysis of extracts of Rat plasma, using NPFF antibody (CAB7020) at 1:500 dilution. Secondary antibody: HRP Goat Anti-Rabbit IgG (H+L) (CABS014) at 1:10000 dilution. Lysates/proteins: 25ug per lane. Blocking buffer: 3% nonfat dry milk in TBST. Detection: ECL Enhanced Kit (CABM00021). Exposure time: 5min.