

# EIF3C Rabbit Polyclonal Antibody



CAB7022

---

## Product Information

### Size:

20uL, 50uL, 100uL, 200uL

### Observed MW:

105kDa

### Calculated MW:

104kDa/105kDa

### Applications:

WB IHC IF

### Reactivity:

Human, Mouse, Rat

## Antibody Information

### Recommended dilutions:

WB 1:500 - 1:2000 IHC 1:50  
- 1:200 IF 1:50 - 1:100

### Source:

Rabbit

### Isotype:

IgG

### Purification:

Affinity purification

## Protein Background

### Immunogen information

#### Gene ID:

8663

#### Uniprot

Q99613

#### Synonyms:

EIF3C; EIF3CL; EIF3S8; eIF3-p110

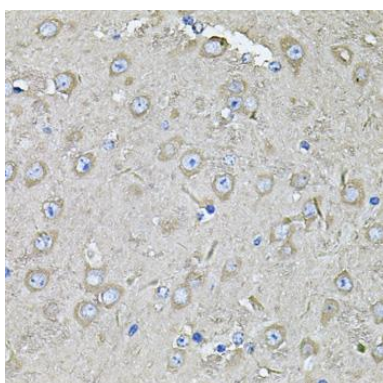
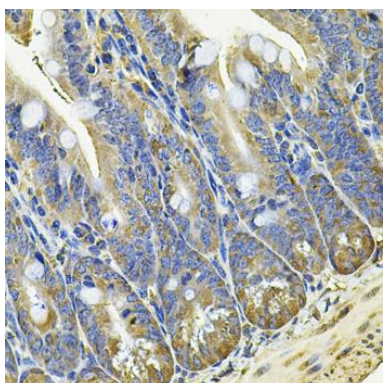
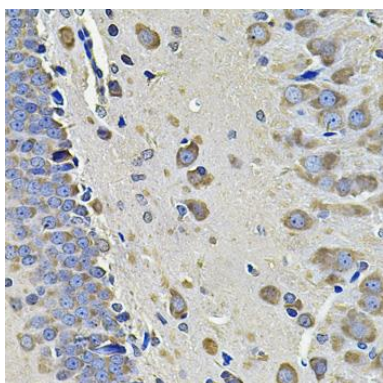
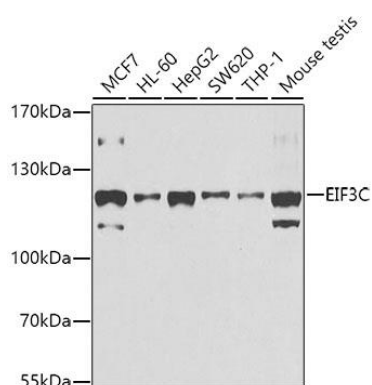
#### Immunogen:

Recombinant fusion protein containing a sequence corresponding to amino acids 694-913 of human EIF3C (NP\_003743.1).

#### Storage:

Store at -20°C. Avoid freeze / thaw cycles. Buffer: PBS with 0.02% sodium azide, 50% glycerol, pH7.3.

## Product Images



Western blot analysis of extracts of various cell lines, using EIF3C antibody (CAB7022) at 1:1000 dilution. Secondary antibody: HRP Goat Anti-Rabbit IgG (H+L) (CABS014) at 1:10000 dilution. Lysates/proteins: 25ug per lane. Blocking buffer: 3% nonfat dry milk in TBST. Detection: ECL Basic Kit (CABM00020). Exposure time: 30s.

Immunohistochemistry of paraffin-embedded rat brain using EIF3C Antibody (CAB7022) at dilution of 1:100 (40x lens).

Immunohistochemistry of paraffin-embedded mouse intestine using EIF3C Antibody (CAB7022) at dilution of 1:100 (40x lens).

Immunohistochemistry of paraffin-embedded mouse brain using EIF3C Antibody (CAB7022) at dilution of 1:100 (40x lens).