

EIF2B2 Rabbit Polyclonal Antibody



CAB7027

Product Information

Size:

20uL, 50uL, 100uL, 200uL

Observed MW:

39kDa

Calculated MW:

38kDa

Applications:

WB IHC IF IP

Reactivity:

Human, Mouse, Rat

Antibody Information

Recommended dilutions:

WB 1:500 - 1:2000 IHC 1:50
- 1:200 IF 1:50 - 1:200 IP
1:50 - 1:200

Source:

Rabbit

Isotype:

IgG

Purification:

Affinity purification

Protein Background

This gene encodes the beta subunit of eukaryotic initiation factor-2B (EIF2B). EIF2B is involved in protein synthesis and exchanges GDP and GTP for its activation and deactivation.

Immunogen information

Gene ID:

8892

Uniprot

P49770

Synonyms:

EIF2B2; EIF-2Bbeta; EIF2B

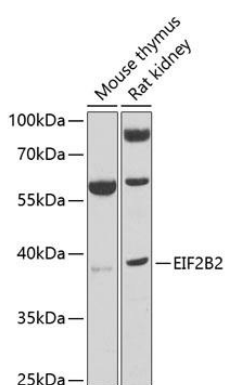
Immunogen:

Recombinant fusion protein containing a sequence corresponding to amino acids 1-351 of human EIF2B2 (NP_055054.1).

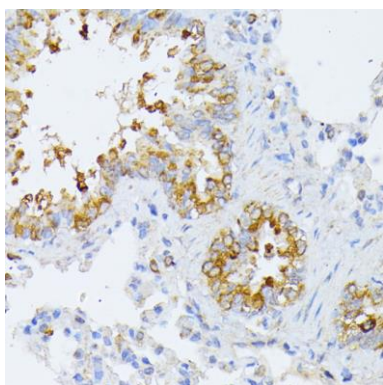
Storage:

Store at -20°C. Avoid freeze / thaw cycles. Buffer: PBS with 0.02% sodium azide, 50% glycerol, pH7.3.

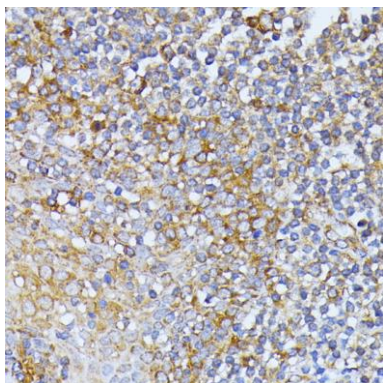
Product Images



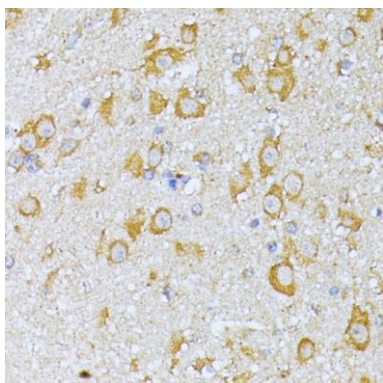
Western blot analysis of extracts of various cell lines, using EIF2B2 antibody (CAB7027) at 1:1000 dilution. Secondary antibody: HRP Goat Anti-Rabbit IgG (H+L) (CABS014) at 1:10000 dilution. Lysates/proteins: 25ug per lane. Blocking buffer: 3% nonfat dry milk in TBST. Detection: ECL Basic Kit (CABM00020). Exposure time: 10s.



Immunohistochemistry of paraffin-embedded rat lung using EIF2B2 antibody (CAB7027) at dilution of 1:100 (40x lens).



Immunohistochemistry of paraffin-embedded human tonsil using EIF2B2 antibody (CAB7027) at dilution of 1:100 (40x lens).



Immunohistochemistry of paraffin-embedded mouse brain using EIF2B2 antibody (CAB7027) at dilution of 1:100 (40x lens).