

EFTUD2 Rabbit Polyclonal Antibody



CAB7040

Product Information

Size:

20uL, 50uL, 100uL, 200uL

Observed MW:

120kDa

Calculated MW:

105kDa/108kDa/109kDa

Applications:

WB IHC IF IP

Reactivity:

Human, Mouse, Rat

Protein Background

This gene encodes a GTPase which is a component of the spliceosome complex which processes precursor mRNAs to produce mature mRNAs. Mutations in this gene are associated with mandibulofacial dysostosis with microcephaly. Multiple transcript variants encoding different isoforms have been found for this gene.

Immunogen information

Gene ID:

9343

Uniprot

Q15029

Synonyms:

EFTUD2; MFDGA; MFDM; SNRNP116; Snrp116; Snu114; U5-116KD

Antibody Information

Recommended dilutions:

WB 1:500 - 1:2000 IHC 1:50

- 1:200 IF 1:50 - 1:100 IP

1:20 - 1:50

Source:

Rabbit

Immunogen:

Recombinant fusion protein containing a sequence corresponding to amino acids 1-205 of human EFTUD2 (NP_004238.3).

Storage:

Store at -20°C. Avoid freeze / thaw cycles. Buffer: PBS with 0.02% sodium azide, 50% glycerol, pH7.3.

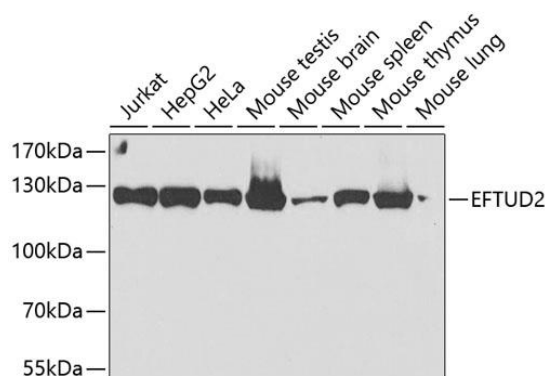
Isotype:

IgG

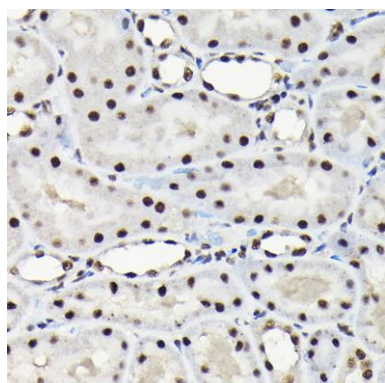
Purification:

Affinity purification

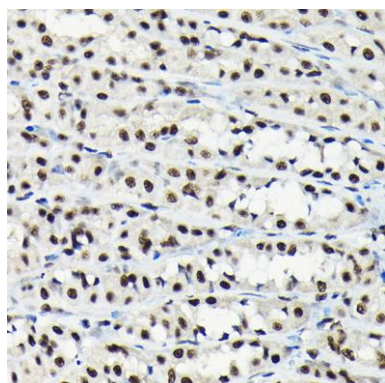
Product Images



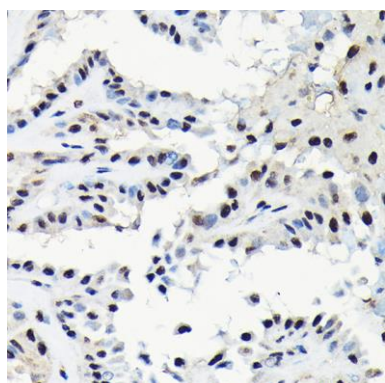
Western blot analysis of extracts of various cell lines, using EFTUD2 antibody (CAB7040) at 1:2000 dilution. Secondary antibody: HRP Goat Anti-Rabbit IgG (H+L) (CABS014) at 1:10000 dilution. Lysates/proteins: 25ug per lane. Blocking buffer: 3% nonfat dry milk in TBST. Detection: ECL Enhanced Kit (CABM00021). Exposure time: 20s.



Immunohistochemistry of paraffin-embedded rat kidney using EFTUD2 Rabbit pAb (CAB7040) at dilution of 1:100 (40x lens).



Immunohistochemistry of paraffin-embedded rat stomach using EFTUD2 Rabbit pAb (CAB7040) at dilution of 1:100 (40x lens).



Immunohistochemistry of paraffin-embedded human thyroid cancer using EFTUD2 Rabbit pAb (CAB7040) at dilution of 1:100 (40x lens).