

# SCO2 Rabbit Polyclonal Antibody



CAB7051

## Product Information

### Size:

20uL, 50uL, 100uL, 200uL

### Observed MW:

30kDa

### Calculated MW:

29kDa

### Applications:

WB IHC

### Reactivity:

Human, Mouse, Rat

## Protein Background

Cytochrome c oxidase (COX) catalyzes the transfer of electrons from cytochrome c to molecular oxygen, which helps to maintain the proton gradient across the inner mitochondrial membrane that is necessary for aerobic ATP production. Human COX is a multimeric protein complex that requires several assembly factors; this gene encodes one of the COX assembly factors. The encoded protein is a metallochaperone that is involved in the biogenesis of cytochrome c oxidase subunit II. Mutations in this gene are associated with fatal infantile encephalomyopathy and myopia 6.

## Immunogen information

### Gene ID:

9997

### Uniprot

O43819

### Synonyms:

SCO2; CEMCOX1; MYP6; SCO1L

## Antibody Information

### Recommended dilutions:

WB 1:500 - 1:2000 IHC 1:50  
- 1:200

### Source:

Rabbit

### Isotype:

IgG

### Purification:

Affinity purification

### Immunogen:

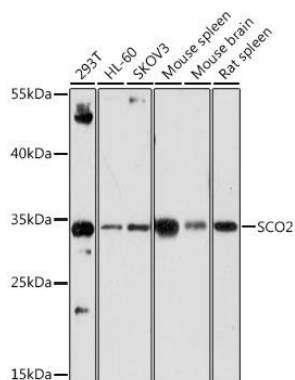
Recombinant fusion protein containing a sequence corresponding to amino acids 1-130 of human SCO2 (NP\_001162582.1).

### Storage:

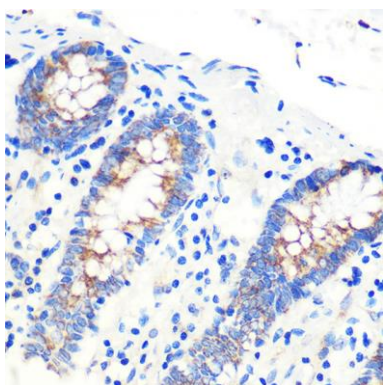
Store at -20°C. Avoid freeze / thaw cycles. Buffer: PBS with 0.02% sodium azide, 50% glycerol, pH7.3.

## Product Images

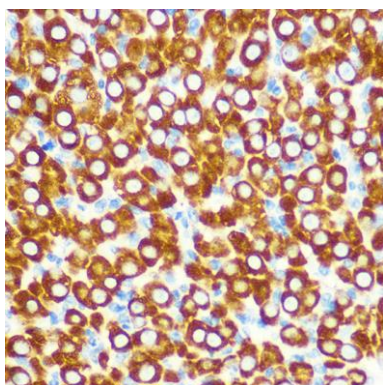
---



Western blot analysis of extracts of various cell lines, using SCO2 antibody (CAB7051) at 1:1000 dilution. Secondary antibody: HRP Goat Anti-Rabbit IgG (H+L) (CABS014) at 1:10000 dilution. Lysates/proteins: 25ug per lane. Blocking buffer: 3% nonfat dry milk in TBST. Detection: ECL Enhanced Kit (CABM00021). Exposure time: 3min.



Immunohistochemistry of paraffin-embedded Human colon using SCO2 Rabbit pAb (CAB7051) at dilution of 1:100 (40x lens).



Immunohistochemistry of paraffin-embedded Rat ovary using SCO2 Rabbit pAb (CAB7051) at dilution of 1:100 (40x lens).