

DNAJB6 Rabbit Polyclonal Antibody



CAB7052

Product Information

Size:

20uL, 50uL, 100uL, 200uL

Observed MW:

40kDa

Calculated MW:

26kDa/30kDa/35kDa/36kDa

Applications:

WB IHC IF

Reactivity:

Human, Mouse, Rat

Antibody Information

Recommended dilutions:

WB 1:500 - 1:2000 IHC 1:50
- 1:200 IF 1:50 - 1:100

Source:

Rabbit

Isotype:

IgG

Purification:

Affinity purification

Protein Background

This gene encodes a member of the DNAJ protein family. DNAJ family members are characterized by a highly conserved amino acid stretch called the 'J-domain' and function as one of the two major classes of molecular chaperones involved in a wide range of cellular events, such as protein folding and oligomeric protein complex assembly. This family member may also play a role in polyglutamine aggregation in specific neurons. Alternative splicing of this gene results in multiple transcript variants; however, not all variants have been fully described.

Immunogen information

Gene ID:

10049

Uniprot

O75190

Synonyms:

DNAJB6; DJ4; DnaJ; HHDJ1; HSJ-2; HSJ2; LGMD1D; LGMD1E; MRJ; MSJ-1

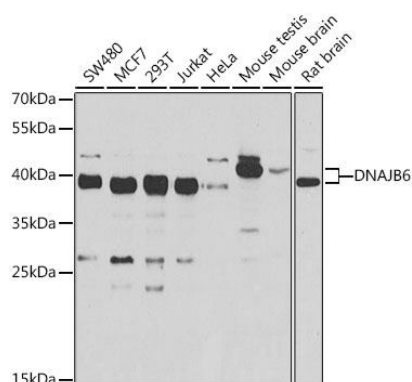
Immunogen:

Recombinant fusion protein containing a sequence corresponding to amino acids 177-326 of human DNAJB6 (NP_490647.1).

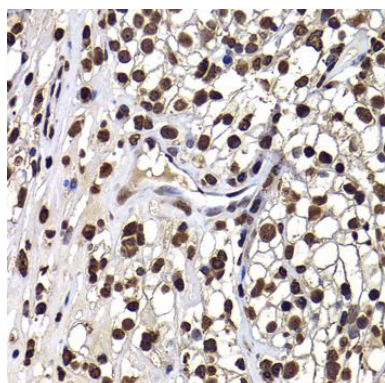
Storage:

Store at -20°C. Avoid freeze / thaw cycles. Buffer: PBS with 0.02% sodium azide, 50% glycerol, pH7.3.

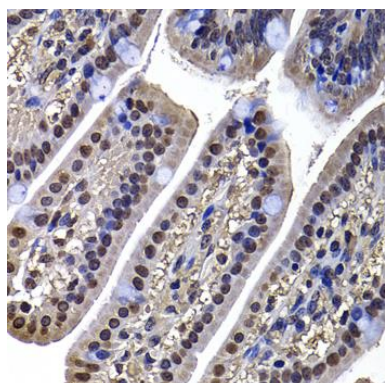
Product Images



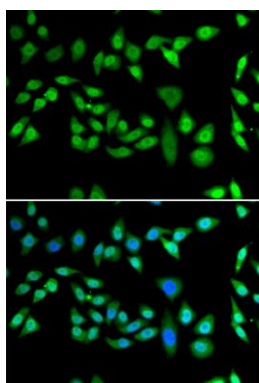
Western blot analysis of extracts of various cell lines, using DNAJB6 antibody (CAB7052) at 1:1000 dilution. Secondary antibody: HRP Goat Anti-Rabbit IgG (H+L) (CABS014) at 1:10000 dilution. Lysates/proteins: 25ug per lane. Blocking buffer: 3% nonfat dry milk in TBST. Detection: ECL Basic Kit (CABM00020). Exposure time: 10s.



Immunohistochemistry of paraffin-embedded human kidney cancer using DNAJB6 antibody (CAB7052) at dilution of 1:100 (40x lens).



Immunohistochemistry of paraffin-embedded mouse ileum using DNAJB6 antibody (CAB7052) at dilution of 1:100 (40x lens).



Immunofluorescence analysis of U2OS cells using DNAJB6 antibody (CAB7052). Blue: DAPI for nuclear staining.