

# DNAJA2 Rabbit Polyclonal Antibody



CAB7059

## Product Information

### Size:

20uL, 50uL, 100uL, 200uL

### Observed MW:

46kDa

### Calculated MW:

45kDa

### Applications:

WB IHC IF

### Reactivity:

Human, Mouse, Rat

## Protein Background

The protein encoded by this gene belongs to the evolutionarily conserved DNAJ/HSP40 family of proteins, which regulate molecular chaperone activity by stimulating ATPase activity. DNAJ proteins may have up to 3 distinct domains: a conserved 70-amino acid J domain, usually at the N terminus; a glycine/phenylalanine (G/F)-rich region; and a cysteine-rich domain containing 4 motifs resembling a zinc finger domain. The product of this gene works as a cochaperone of Hsp70s in protein folding and mitochondrial protein import in vitro.

## Immunogen information

### Gene ID:

10294

### Uniprot

O60884

### Synonyms:

DNAJA2; CPR3; DJ3; DJA2; DNAJ; DNJ3; HIRIP4; PRO3015; RDJ2

## Antibody Information

### Recommended dilutions:

WB 1:500 - 1:2000 IHC 1:50  
- 1:200 IF 1:50 - 1:200

### Source:

Rabbit

### Isotype:

IgG

### Purification:

Affinity purification

### Immunogen:

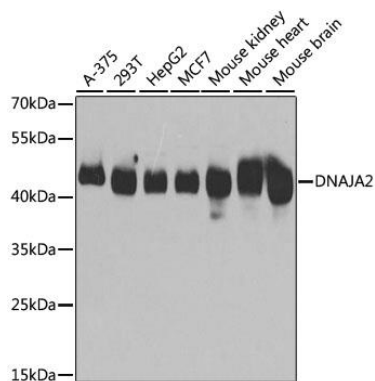
Recombinant fusion protein containing a sequence corresponding to amino acids 233-412 of human DNAJA2 (NP\_005871.1).

### Storage:

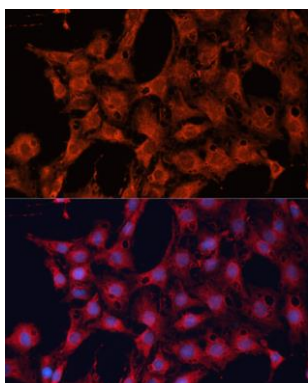
Store at -20°C. Avoid freeze / thaw cycles. Buffer: PBS with 0.02% sodium azide, 50% glycerol, pH7.3.

## Product Images

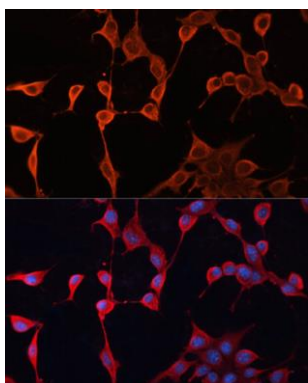
---



Western blot analysis of extracts of various cell lines, using DNAJA2 antibody (CAB7059) at 1:3000 dilution. Secondary antibody: HRP Goat Anti-Rabbit IgG (H+L) (CABS014) at 1:10000 dilution. Lysates/proteins: 25ug per lane. Blocking buffer: 3% nonfat dry milk in TBST. Detection: ECL Basic Kit (CABM00020). Exposure time: 5s.



Immunofluorescence analysis of C6 cells using DNAJA2 antibody (CAB7059) at dilution of 1:100. Blue: DAPI for nuclear staining.



Immunofluorescence analysis of NIH/3T3 cells using DNAJA2 antibody (CAB7059) at dilution of 1:100. Blue: DAPI for nuclear staining.