

# VTI1B Rabbit Polyclonal Antibody



CAB7062

## Product Information

### Size:

20uL, 50uL, 100uL, 200uL

### Observed MW:

27kDa

### Calculated MW:

19kDa/26kDa

### Applications:

WB IHC IF

### Reactivity:

Human, Mouse

## Antibody Information

### Recommended dilutions:

WB 1:500 - 1:2000 IHC 1:50  
- 1:200 IF 1:50 - 1:100

### Source:

Rabbit

### Isotype:

IgG

### Purification:

Affinity purification

## Protein Background

### Immunogen information

#### Gene ID:

10490

#### Uniprot

Q9JEU0

#### Synonyms:

VTI1B; VTI1; VTI1-LIKE; VTI1L; VTI2; v-SNARE; vti1-rp1

#### Immunogen:

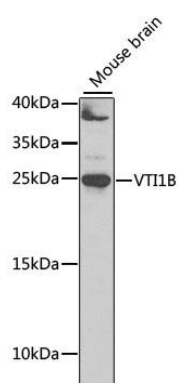
Recombinant fusion protein containing a sequence corresponding to amino acids 1-210 of human VTI1B (NP\_006361.1).

#### Storage:

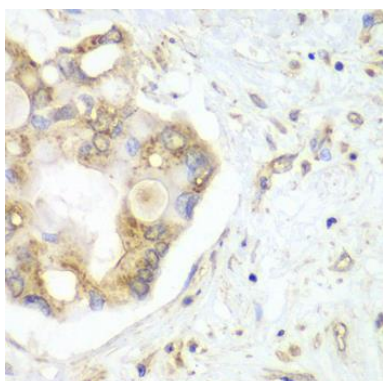
Store at -20°C. Avoid freeze / thaw cycles. Buffer: PBS with 0.02% sodium azide, 50% glycerol, pH7.3.

## Product Images

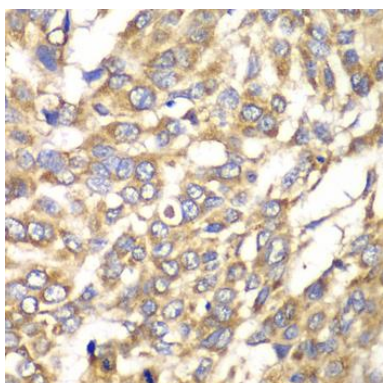
---



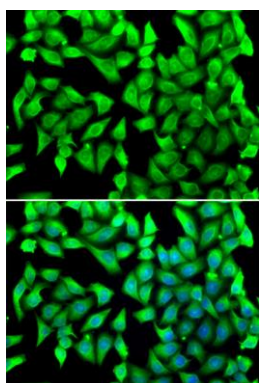
Western blot analysis of extracts of mouse brain, using VTI1B antibody (CAB7062) at 1:1000 dilution. Secondary antibody: HRP Goat Anti-Rabbit IgG (H+L) (CABS014) at 1:10000 dilution. Lysates/proteins: 25ug per lane. Blocking buffer: 3% nonfat dry milk in TBST. Detection: ECL Basic Kit (CABM00020). Exposure time: 30s.



Immunohistochemistry of paraffin-embedded human liver cancer using VTI1B antibody (CAB7062) at dilution of 1:100 (40x lens).



Immunohistochemistry of paraffin-embedded human esophageal cancer using VTI1B antibody (CAB7062) at dilution of 1:100 (40x lens).



Immunofluorescence analysis of U2OS cells using VTI1B antibody (CAB7062). Blue: DAPI for nuclear staining.