

AGR2 Rabbit Polyclonal Antibody



CAB7064

Product Information

Size:

20uL, 50uL, 100uL, 200uL

Observed MW:

20kDa

Calculated MW:

19kDa

Applications:

WB IHC IF

Reactivity:

Human, Mouse, Rat

Antibody Information

Recommended dilutions:

WB 1:500 - 1:2000 IHC 1:50
- 1:200 IF 1:50 - 1:200

Source:

Rabbit

Isotype:

IgG

Purification:

Affinity purification

Protein Background

This gene encodes a member of the disulfide isomerase (PDI) family of endoplasmic reticulum (ER) proteins that catalyze protein folding and thiol-disulfide interchange reactions. The encoded protein has an N-terminal ER-signal sequence, a catalytically active thioredoxin domain, and a C-terminal ER-retention sequence. This protein plays a role in cell migration, cellular transformation and metastasis and is as a p53 inhibitor. As an ER-localized molecular chaperone, it plays a role in the folding, trafficking, and assembly of cysteine-rich transmembrane receptors and the cysteine-rich intestinal glycoprotein mucin. This gene has been implicated in inflammatory bowel disease and cancer progression.

Immunogen information

Gene ID:

10551

Uniprot

O95994

Synonyms:

AGR2; AG-2; AG2; GOB-4; HAG-2; HEL-S-116; HPC8; PDIA17; XAG-2

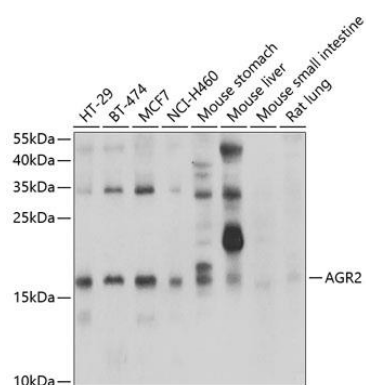
Immunogen:

Recombinant fusion protein containing a sequence corresponding to amino acids 21-175 of human AGR2 (NP_006399.1).

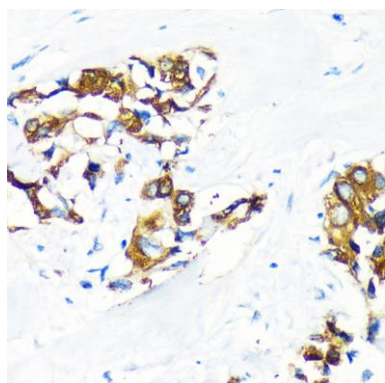
Storage:

Store at -20°C. Avoid freeze / thaw cycles. Buffer: PBS with 0.02% sodium azide, 50% glycerol, pH7.3.

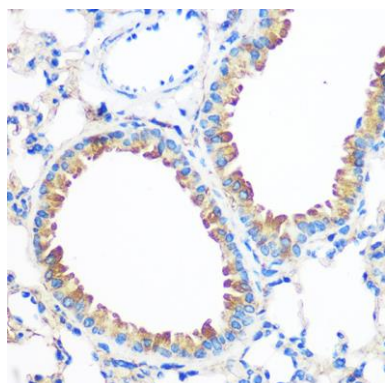
Product Images



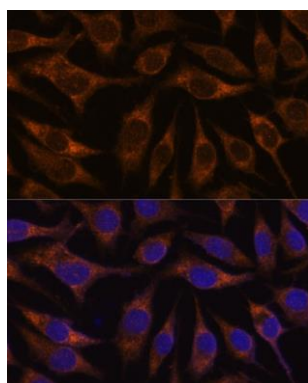
Western blot analysis of extracts of various cell lines, using AGR2 antibody (CAB7064) at 1:1000 dilution. Secondary antibody: HRP Goat Anti-Rabbit IgG (H+L) (CABS014) at 1:10000 dilution. Lysates/proteins: 25ug per lane. Blocking buffer: 3% nonfat dry milk in TBST. Detection: ECL Basic Kit (CABM00020). Exposure time: 1s.



Immunohistochemistry of paraffin-embedded Human lung cancer using AGR2 Rabbit pAb (CAB7064) at dilution of 1:100 (40x lens).



Immunohistochemistry of paraffin-embedded Mouse lung using AGR2 Rabbit pAb (CAB7064) at dilution of 1:100 (40x lens).



Immunofluorescence analysis of L929 cells using AGR2 antibody (CAB7064) at dilution of 1:100. Blue: DAPI for nuclear staining.