

# STAMBP Rabbit Polyclonal Antibody



CAB7065

## Product Information

### Size:

20uL, 50uL, 100uL, 200uL

### Observed MW:

48kDa

### Calculated MW:

39kDa/48kDa

### Applications:

WB IHC IF IP

### Reactivity:

Human, Mouse, Rat

## Protein Background

Cytokine-mediated signal transduction in the JAK-STAT cascade requires the involvement of adaptor molecules. One such signal-transducing adaptor molecule contains an SH3 domain that is required for induction of MYC and cell growth. The protein encoded by this gene binds to the SH3 domain of the signal-transducing adaptor molecule, and plays a critical role in cytokine-mediated signaling for MYC induction and cell cycle progression. Multiple alternatively spliced transcript variants encoding the same protein isoform have been found for this gene.

## Immunogen information

### Gene ID:

10617

### Uniprot

O95630

### Synonyms:

STAMBP; AMSH; MICCAP

## Antibody Information

### Recommended dilutions:

WB 1:500 - 1:2000 IHC 1:50  
- 1:200 IF 1:50 - 1:100 IP  
1:20 - 1:50

### Source:

Rabbit

### Isotype:

IgG

### Purification:

Affinity purification

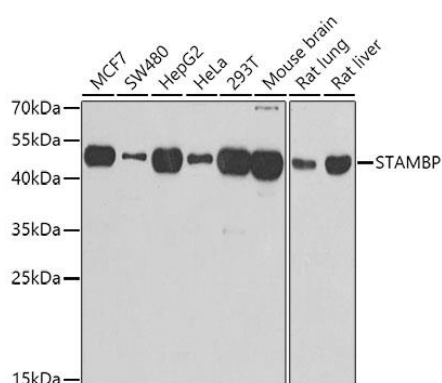
### Immunogen:

Recombinant fusion protein containing a sequence corresponding to amino acids 100-270 of human STAMBP (NP\_998787.1).

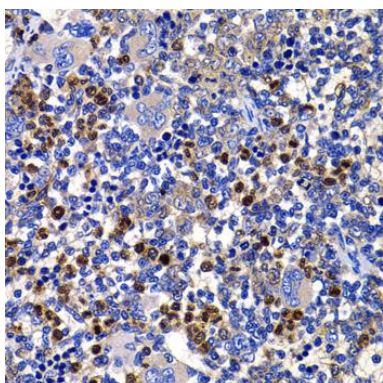
### Storage:

Store at -20°C. Avoid freeze / thaw cycles. Buffer: PBS with 0.02% sodium azide, 50% glycerol, pH7.3.

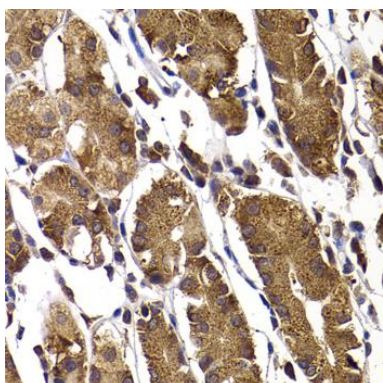
## Product Images



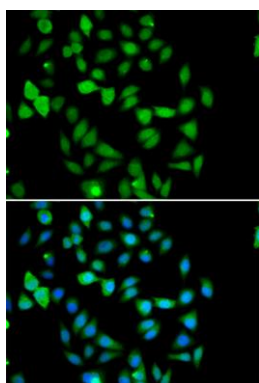
Western blot analysis of extracts of various cell lines, using STAMBP antibody (CAB7065) at 1:1000 dilution. Secondary antibody: HRP Goat Anti-Rabbit IgG (H+L) (CABS014) at 1:10000 dilution. Lysates/proteins: 25ug per lane. Blocking buffer: 3% nonfat dry milk in TBST. Detection: ECL Basic Kit (CABM00020). Exposure time: 30s.



Immunohistochemistry of paraffin-embedded rat spleen using STAMBP antibody (CAB7065) at dilution of 1:100 (40x lens).



Immunohistochemistry of paraffin-embedded human stomach using STAMBP antibody (CAB7065) at dilution of 1:100 (40x lens).



Immunofluorescence analysis of U2OS cells using STAMBP antibody (CAB7065). Blue: DAPI for nuclear staining.