

CAB7068

Product Information

Size:

20uL, 50uL, 100uL, 200uL

Observed MW:

Calculated MW:

19kDa

Applications:

IHC

Reactivity:

Human, Mouse

Antibody Information

Recommended dilutions:

IHC 1:50 - 1:100

Source:

Rabbit

Isotype:

IgG

Purification:

Affinity purification

Protein Background

This gene encodes a member of the neuromedin family of neuropeptides. The encoded protein is a precursor that is proteolytically processed to generate a biologically active neuropeptide that plays a role in pain, stress, immune-mediated inflammatory diseases and feeding regulation. Increased expression of this gene was observed in renal, pancreatic and lung cancers. Alternative splicing results in multiple transcript variants encoding different isoforms. Some of these isoforms may undergo similar processing to generate the mature peptide.

Immunogen information

Gene ID:

10874

Uniprot

P48645

Synonyms:

NMU

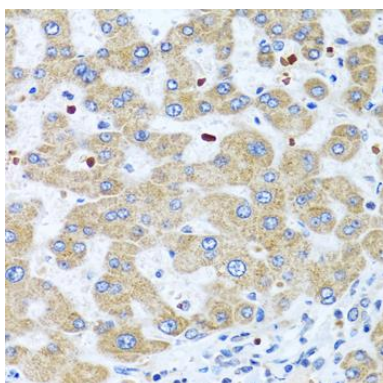
Immunogen:

Recombinant fusion protein containing a sequence corresponding to amino acids 35-174 of human NMU (NP_006672.1).

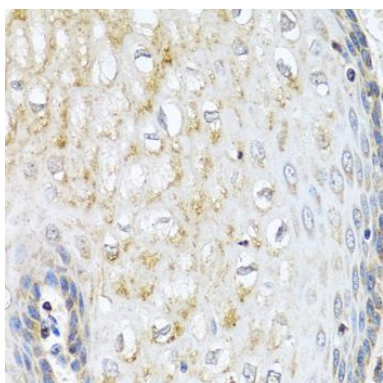
Storage:

Store at -20°C. Avoid freeze / thaw cycles. Buffer: PBS with 0.02% sodium azide, 50% glycerol, pH7.3.

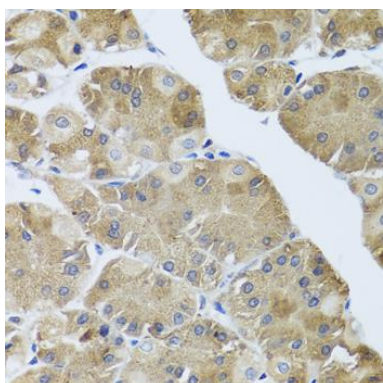
Product Images



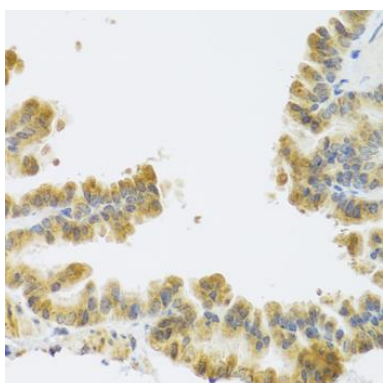
Immunohistochemistry of paraffin-embedded human liver using NMU antibody (CAB7068) at dilution of 1:100 (40x lens).



Immunohistochemistry of paraffin-embedded human esophagus using NMU antibody (CAB7068) at dilution of 1:100 (40x lens).



Immunohistochemistry of paraffin-embedded human stomach using NMU antibody (CAB7068) at dilution of 1:100 (40x lens).



Immunohistochemistry of paraffin-embedded mouse lung using NMU antibody (CAB7068) at dilution of 1:100 (40x lens).