

# SUB1 Rabbit Polyclonal Antibody



CAB7070

---

## Product Information

### Size:

20uL, 50uL, 100uL, 200uL

### Observed MW:

17kDa

### Calculated MW:

14kDa

### Applications:

WB IHC IF IP

### Reactivity:

Human, Mouse

## Antibody Information

### Recommended dilutions:

WB 1:500 - 1:2000 IHC 1:50  
- 1:200 IF 1:50 - 1:100 IP  
1:20 - 1:50

### Source:

Rabbit

### Isotype:

IgG

### Purification:

Affinity purification

## Protein Background

### Immunogen information

#### Gene ID:

10923

#### Uniprot

P53999

#### Synonyms:

SUB1; P15; PC4; p14; SUB1 homolog

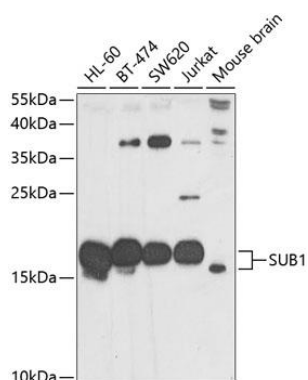
#### Immunogen:

Recombinant fusion protein containing a sequence corresponding to amino acids 1-127 of human SUB1 (NP\_006704.3).

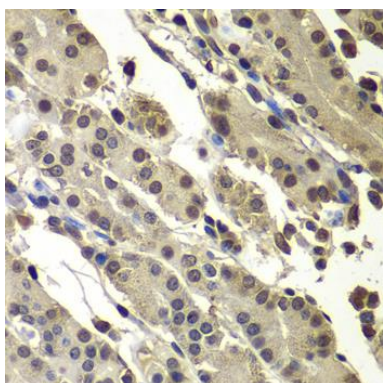
#### Storage:

Store at -20°C. Avoid freeze / thaw cycles. Buffer: PBS with 0.02% sodium azide, 50% glycerol, pH7.3.

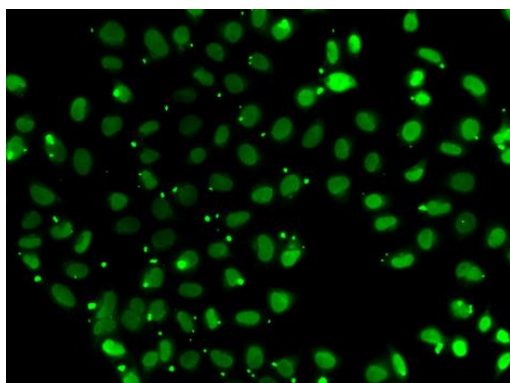
## Product Images



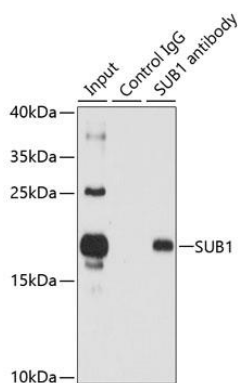
Western blot analysis of extracts of various cell lines, using SUB1 antibody (CAB7070) at 1:1000 dilution. Secondary antibody: HRP Goat Anti-Rabbit IgG (H+L) (CABS014) at 1:10000 dilution. Lysates/proteins: 25ug per lane. Blocking buffer: 3% nonfat dry milk in TBST. Detection: ECL Basic Kit (CABM00020). Exposure time: 30s.



Immunohistochemistry of paraffin-embedded human stomach using SUB1 antibody (CAB7070) at dilution of 1:100 (40x lens).



Immunofluorescence analysis of A549 cells using SUB1 antibody (CAB7070).



Immunoprecipitation analysis of 150ug extracts of HL60 cells using 3ug SUB1 antibody (CAB7070). Western blot was performed from the immunoprecipitate using SUB1 antibody (CAB7070) at a dilution of 1:500.