

MORF4L1 Rabbit Polyclonal Antibody



CAB7071

Product Information

Size:

20uL, 50uL, 100uL, 200uL

Observed MW:

41kDa

Calculated MW:

26kDa/37kDa/41kDa

Applications:

WB IF

Reactivity:

Human, Mouse, Rat

Antibody Information

Recommended dilutions:

WB 1:500 - 1:2000 IF 1:50 - 1:100

Source:

Rabbit

Isotype:

IgG

Purification:

Affinity purification

Protein Background

Immunogen information

Gene ID:

10933

Uniprot

Q9UBU8

Synonyms:

MORF4L1; Eaf3; FWP006; HsT17725; MEAF3; MORFRG15; MRG15; S863-6

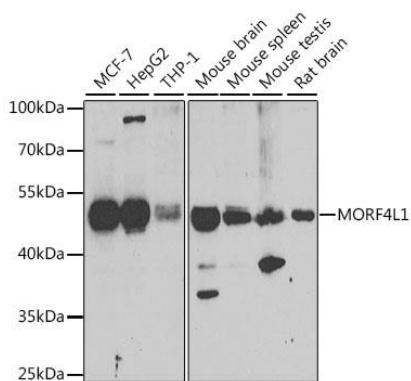
Immunogen:

Recombinant fusion protein containing a sequence corresponding to amino acids 1-100 of human MORF4L1 (NP_006782.1).

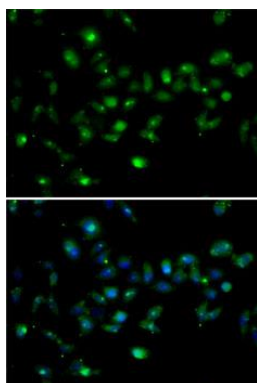
Storage:

Store at -20°C. Avoid freeze / thaw cycles. Buffer: PBS with 0.02% sodium azide, 50% glycerol, pH7.3.

Product Images



Western blot analysis of extracts of various cell lines, using MORF4L1 antibody (CAB7071) at 1:1000 dilution. Secondary antibody: HRP Goat Anti-Rabbit IgG (H+L) (CABS014) at 1:10000 dilution. Lysates/proteins: 25ug per lane. Blocking buffer: 3% nonfat dry milk in TBST. Detection: ECL Enhanced Kit (CABM00021). Exposure time: 90s.



Immunofluorescence analysis of MCF7 cells using MORF4L1 antibody (CAB7071). Blue: DAPI for nuclear staining.