

TUSC2 Rabbit Polyclonal Antibody



CAB7075

Product Information

Size:

20uL, 50uL, 100uL, 200uL

Observed MW:

Refer to Figures

Calculated MW:

12kDa

Applications:

WB IHC IF

Reactivity:

Human, Mouse, Rat

Antibody Information

Recommended dilutions:

WB 1:500 - 1:2000 IHC 1:50
- 1:200 IF 1:50 - 1:100

Source:

Rabbit

Isotype:

IgG

Purification:

Affinity purification

Protein Background

This gene is a highly conserved lung cancer candidate gene. No other information about this gene is currently available.

Immunogen information

Gene ID:

11334

Uniprot

O75896

Synonyms:

TUSC2; C3orf11; FUS1; PAP; PDAP2

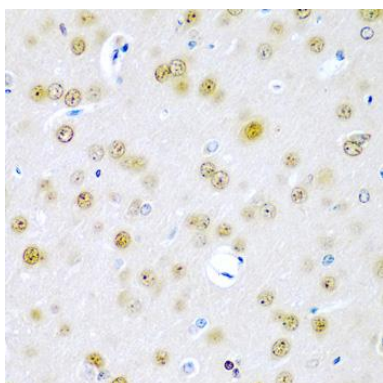
Immunogen:

Recombinant fusion protein containing a sequence corresponding to amino acids 1-110 of human TUSC2 (NP_009206.1).

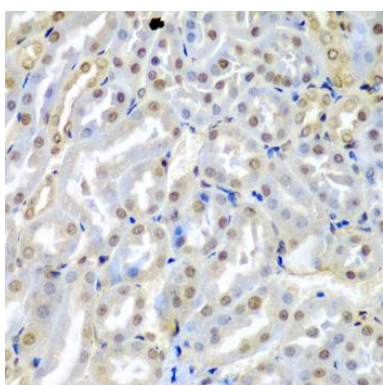
Storage:

Store at -20°C. Avoid freeze / thaw cycles. Buffer: PBS with 0.02% sodium azide, 50% glycerol, pH7.3.

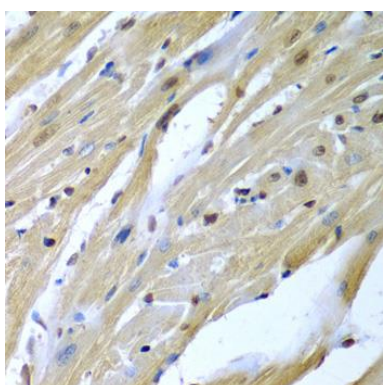
Product Images



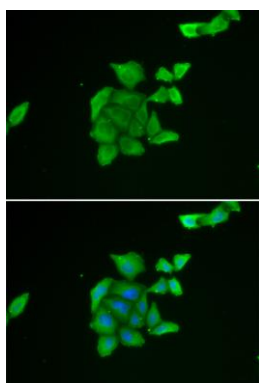
Immunohistochemistry of paraffin-embedded rat brain using TUSC2 antibody (CAB7075) at dilution of 1:200 (40x lens).



Immunohistochemistry of paraffin-embedded mouse kidney using TUSC2 antibody (CAB7075) at dilution of 1:200 (40x lens).



Immunohistochemistry of paraffin-embedded mouse heart using TUSC2 antibody (CAB7075) at dilution of 1:200 (40x lens).



Immunofluorescence analysis of U2OS cells using TUSC2 antibody (CAB7075). Blue: DAPI for nuclear staining.