

# MTF2 Rabbit Polyclonal Antibody



CAB7077

## Product Information

### Size:

20uL, 50uL, 100uL, 200uL

### Observed MW:

67kDa

### Calculated MW:

29kDa/55kDa/60kDa/67kDa

### Applications:

WB IF

### Reactivity:

Human, Mouse, Rat

## Antibody Information

### Recommended dilutions:

WB 1:500 - 1:2000 IF 1:50 - 1:100

### Source:

Rabbit

### Isotype:

IgG

### Purification:

Affinity purification

## Protein Background

### Immunogen information

#### Gene ID:

22823

#### Uniprot

Q9Y483

#### Synonyms:

MTF2; M96; PCL2; TDRD19A; dJ976O13.2

#### Immunogen:

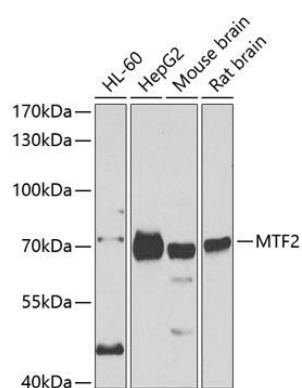
Recombinant fusion protein containing a sequence corresponding to amino acids 1-190 of human MTF2 (NP\_001157864.1).

#### Storage:

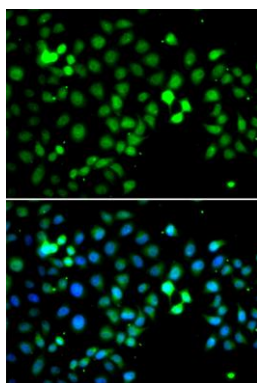
Store at -20°C. Avoid freeze / thaw cycles. Buffer: PBS with 0.02% sodium azide, 50% glycerol, pH7.3.

## Product Images

---



Western blot analysis of extracts of various cell lines, using MTF2 antibody (CAB7077) at 1:1000 dilution. Secondary antibody: HRP Goat Anti-Rabbit IgG (H+L) (CABS014) at 1:10000 dilution. Lysates/proteins: 25ug per lane. Blocking buffer: 3% nonfat dry milk in TBST.



Immunofluorescence analysis of A549 cells using MTF2 antibody (CAB7077). Blue: DAPI for nuclear staining.